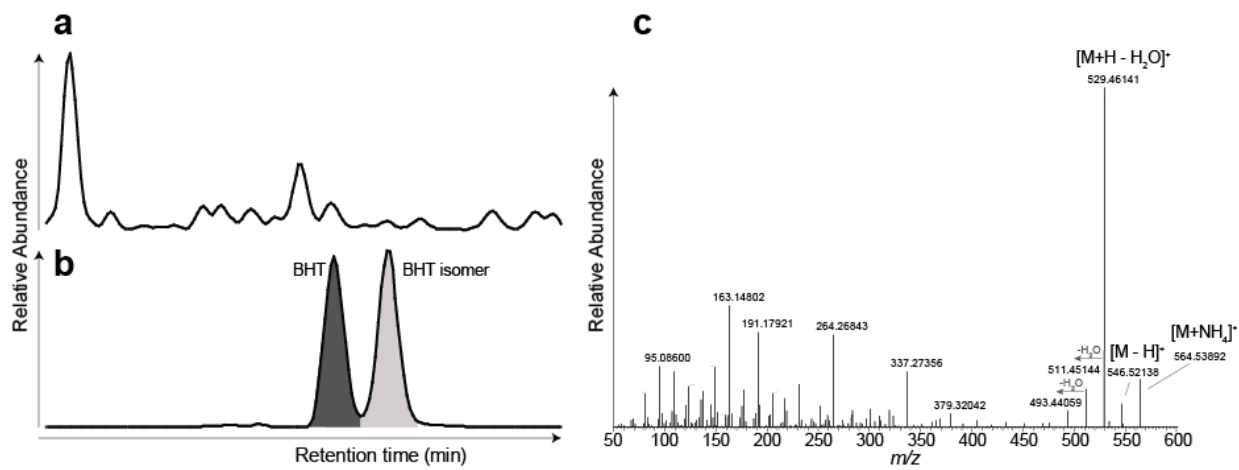


Sup Fig 1.



Supplemental Figure 1. Base peak chromatogram (a) and combined extracted ion currents (within 3 ppm) of protonated, ammoniated, and sodiated adducts (m/z 547.47209 + 564.49864 + 569.45403, respectively) (b) of non-derivatised BHT and BHT isomer in sediment from 64PE406-E1 core depth 46 – 47 cm. (c) Combined orbitrap HRMS₂ of 6 scan events over the ammoniated adduct ([M+NH₄]⁺; m/z 564.49864) of BHT isomer.