
1 **Distribution and behaviour of dissolved**
2 **selenium in tropical peatland-draining**
3 **rivers and estuaries of Malaysia**

4

5 Yan Chang^{1*}, Moritz Müller², Ying Wu¹, Shan Jiang¹, Wanwan Cao¹, Jianguo
6 Qu¹, Jingling Ren³, Xiaona Wang¹, Enming Rao³, Xiaolu Wang¹, Aazani
7 Mujahid⁴, Mohd Fakharuddin Muhamad², Edwin Sia Sien Aun², Faddrine Holt
8 Ajon Jang², Jing Zhang¹

9

10 ¹ State Key Laboratory of Estuarine and Coastal Research, East China Normal
11 University, Shanghai 200062, China

12 ² Faculty of Engineering, Computing and Science Swinburne, University of
13 Technology, Sarawak 93350, Malaysia

14 ³ Key Laboratory of Marine Chemistry Theory and Technology, Ministry of
15 Education, Ocean University of China, Qingdao 266100, China

16 ⁴ Faculty of Resource Science and Technology, University Malaysia Sarawak,
17 Sarawak 93350, Malaysia

18

19 Correspondence:

20 Yan Chang

21 Email: ychang@sklec.ecnu.edu.cn

22

23 Table S1 Ranges (with Mean values in parentheses) of temperature, salinity, pH, dissolved oxygen, TDSe, DISe, DOSe
 24 concentration and DOSe/TDSe ratio in the sampled estuaries in Malaysia in March and September 2017, respectively. (n.a. and
 25 DLs represent not available and detection limits, respectively)

Rivers and Estuaries	Periods	Temperature (°C)	Salinity	pH	DO (mg L ⁻¹)	TDSe (nmol L ⁻¹)	DISe (nmol L ⁻¹)	DOSe (nmol L ⁻¹)	DOSe/TDSe ratio
Rajang	March	27-30	0-30.1	6.03-8.24	4.55-7.57	1.09-3.72 (1.86)	0.12-0.41 (0.25)	0.69-4.51 (1.61)	0.63-0.96 (0.83)
	September	26.3-30.18	0-31.9	5.23-7.25	4.16-8.20	1.67-2.96 (2.17)	0.13-0.47 (0.24)	1.06-2.75 (1.92)	0.72-0.97 (0.88)
Maludam	March	26-29.2	0.01-20.0	3.70-7.56	1.78-6.85	1.78-4.04 (2.41)	DLs-0.29 (0.06)	1.42-4.04 (2.35)	0.70-0.99 (0.96)
	September	25-32.2	0.03-21.0	4.16-7.9	1.5-6.23	1.47-3.89 (2.29)	DLs-0.26 (0.07)	1.22-3.89 (2.21)	0.83-0.99 (0.96)
Sebuyau	March	27.8-30.7	0-23.5	4.32-7.75	1.39-7.88	1.59-6.85 (2.77)	DLs-0.35 (0.14)	1.32-5.02 (2.49)	0.73-0.99 (0.92)
	September	28-31.3	0.01-10.7	n.a.	2.08-6.18	1.38-2.64 (2.19)	DLs -0.19 0.06)	1.38-2.63 (2.13)	0.93-0.99 (0.98)
Simunjan	March	27.4-28.9	0-0.43	4.66-6.31	0.99-2.58	1.95-5.72 (3.85)	DLs-0.14 (0.03)	1.80-5.72 (3.84)	0.93-0.99 (0.98)
	September	27.6-28.4	0-4.6	4.72-6.65	3.04-4.20	1.47-2.64 (2.17)	DLs-0.38 (0.097)	1.31-2.49 (2.07)	0.86-0.99 (0.95)
Samunsam	March	27.8-30.7	0.36-27.4	6.29-8.36	5.57-6.72	1.28-4.17 (2.28)	0.02-0.25 (0.16)	1.06-4.12 (2.11)	0.82-0.99 (0.91)
	September	26.5-31.0	0.64-32.6	4.6-8.2	n.a.	1.36-2.69 (1.78)	0.0036-0.35 (0.15)	1.05-2.46 (1.63)	0.78-0.99 (0.91)
Sematan	March	26.5-29.8	0.14-28.0	6.80-8.34	5.88-6.64	1.10-2.45 (1.71)	0.16-0.29 (0.22)	0.85-2.19 (1.48)	0.78-0.91 (0.86)
	September	26.6-31.1	3.39-32.6	7.9-8.2	n.a.	0.70-2.68 (1.32)	0.12-0.35(0.26)	0.42-2.46 (1.06)	0.60-0.94(0.76)
Lundu	September	30.3-30.6	15.1-31.04	7.3-8	n.a.	0.80-1.72 (1.29)	0.26-0.35(0.31)	0.45-1.41 (0.97)	0.56-0.82 (0.73)

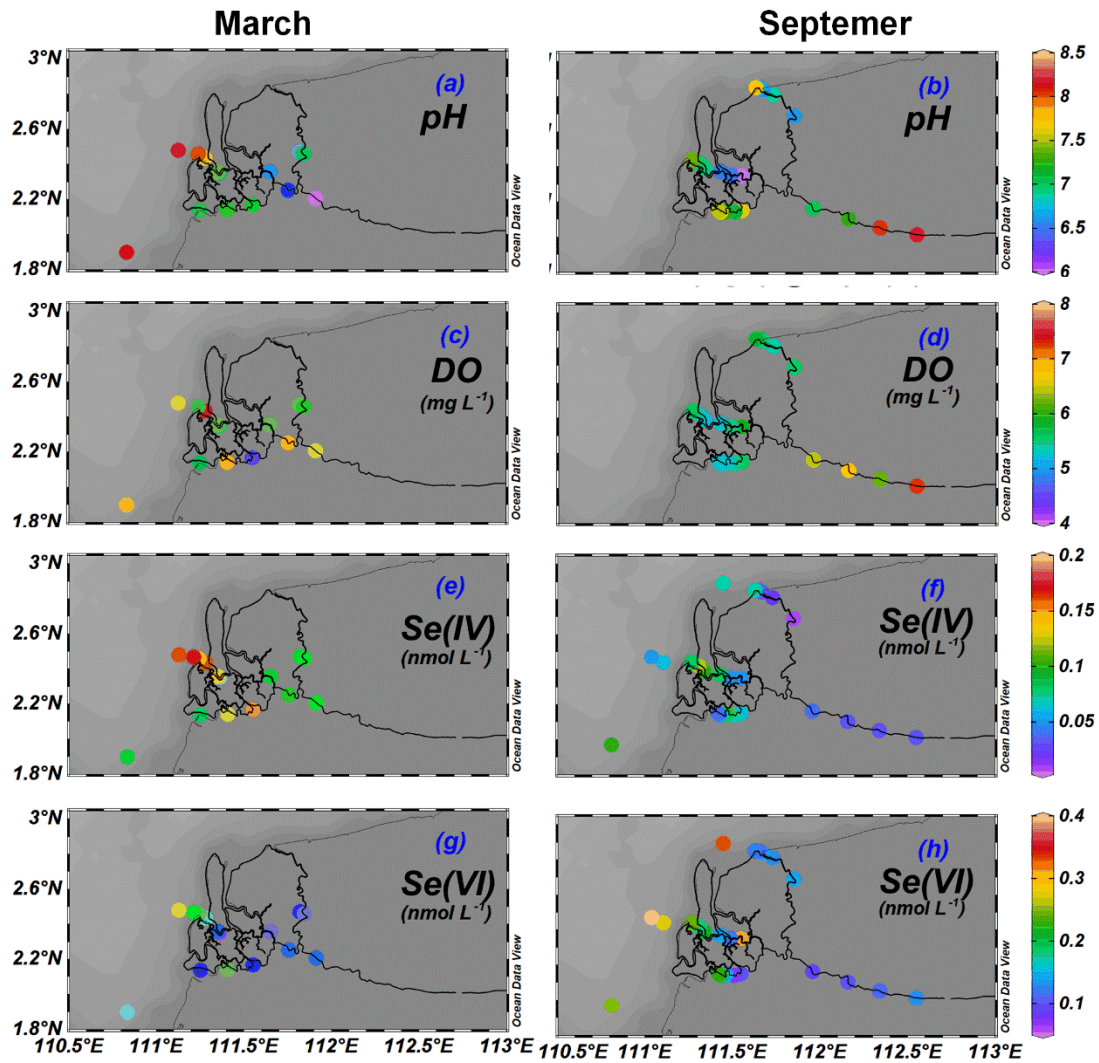


Figure S1 Distributions of pH, dissolved oxygen (DO), Se(IV) and Se(VI) concentrations in March and September 2017 in the Rajang Estuary.

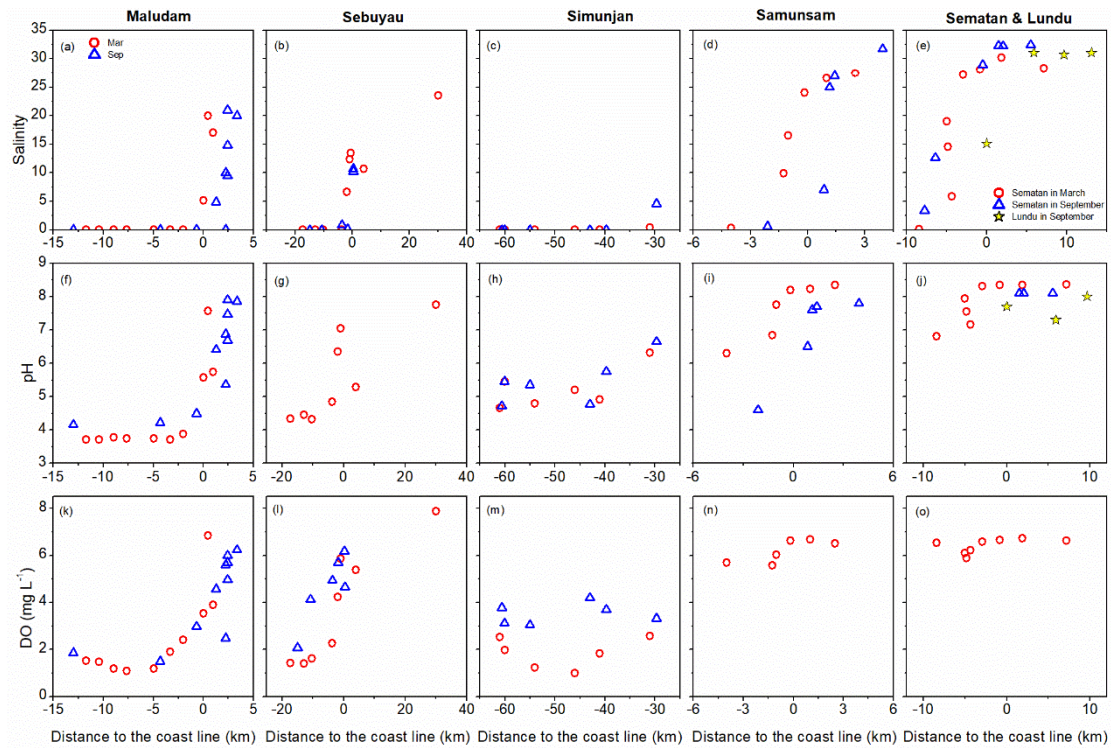


Figure S2 Salinity, pH and dissolved oxygen (DO) concentrations along the Maludam, Sebuyau, Simunjan, Samunsam, Sematan and Lunda estuaries, in March and September 2017, respectively.