

1 This document provides supplementary information for the publication “Influence
2 of climate variability, fire and phosphorus limitation on the vegetation dynamics and
3 structure in the Amazon-Cerrado border” to appear in Biogeosciences.

4 5 **S1. Regional phosphorus database**

6 We used 54 samples of phosphorus content in the soil, where 52 were obtained
7 via the Mehlich-1 extractor (H_2SO_4 , 0.025mol L^{-1} + HCl 0.05mol L^{-1}) 1:10 soil: solution
8 ratio, and two were direct measurements of total phosphorus content (P_{total}) in the soil. In
9 addition to these samples collected in the field, a phosphorus soil map of the Amazon was
10 also used (Quesada et al., 2010).

11 The 54 samples of P content were provided by researchers from the UNEMAT –
12 State University of Mato Grosso, collected for different vegetation types ranging from
13 sparse physiognomies like *Campo de Murundus*, open flooded field, *Cerrado típico* to
14 more dense forest formations such as *Cerradão*, semideciduous forest, evergreen seasonal
15 forest and gallery forest in the Amazon-Cerrado transition region in the state of Mato
16 Grosso.

17 The database of Quesada et al. (2010) provides data of physicochemical properties
18 of the soil, and Hedley fractionation data with eight different fractions of phosphorus
19 content in the soil, including: phosphorus extracted by resin (P_{resin}), P_{total} and residual.
20 The location, name of the experimental sites, value of P_{total} , P_{Resin} and clay percent used
21 to establish the relationship between $\text{P}_{\text{Mehlich-1}}$ and P_{total} are shown in Table S1.

22 Based on the Freire (2001) equation, the amount of phosphorus remaining in the
23 soil, i.e., the existing amount of P in the soil (P_{rem}) was estimated for each site, based on
24 their clay content:

$$25 \quad \text{P}_{\text{rem}} = 52.44 - 0.9646 C + 0.005 C^2 \quad R^2 = 0.747 \quad (1)$$

26 where P_{rem} is expressed in $mg L^{-1}$ and C is the clay content in %. P_{rem} is the P
27 concentration that remains in solution after shaking soil with $0.01 mol L^{-1} CaCl_2$
28 containing $60 mg L^{-1} P$ (Alves and Lavorenti, 2006).

29 After obtaining of the remaining values (P_{rem}), it was necessary to estimate the
30 phosphorus maximum adsorption capacity (CMAP) of each soil, in order to calculate how
31 much phosphorus each soil is capable of adsorbing.

32 Based on significative data from several studies (Bognola, 1995; Campello et al.,
33 1994; Fabres, 1986; Gonçalves, 1988; Ker, 1995; Moreira, 1988; Muniz, 1983; Novelino,
34 1999; Paula, 1993), Neves (2000) proposed Equation (2) to calculate CMAP from P_{rem} :

$$35 \quad CMAP = 1816.1 - 373.72 \log P_{rem} \quad R^2 = 0.751 \quad (2)$$

36 where CMAP is expressed in $mg kg^{-1}$ and P_{rem} in $mg L^{-1}$.

37 Knowing the CMAP, Neves (2000) also proposed a robust model (Equation 3),
38 which estimates how much the Mehlich-1 extractor is capable of removing of P added in
39 each soil sample ($P_{Mehlich-1}/P_{Adc}$). This relationship was adjusted based on 31 soil samples
40 data from the work of Bahia-Filho (1982), Muniz (1983), Gonçalves (1988) and Novelino
41 (1999);

42

$$43 \quad \frac{P_{Mehlich-1}}{P_{Adc}} = 380.96 CMAP^{-1.2101} \quad R^2 = 0.734, (p < 0.001)$$

44 (3)

45 where P_{Adc} is the added dose of P in soil expressed in $mg kg^{-1}$.

46 Finally, knowing $P_{Mehlich-1}/P_{Adc}$, $P_{resin}/P_{Mehlich-1}$ was estimated using the Equation
47 (4) established by Neves (2000) with $r=0.899$, $n=26$.

$$48 \quad \frac{P_{resin}}{P_{Mehlich-1}} = 0.5553 \left(\frac{P_{Mehlich-1}}{P_{Adc}} \right)^{0.6002} \quad R^2 = 0.808, (p < 0.001)$$

49 (4)

50 where P_{resin} is expressed in $mg kg^{-1}$.

51 With the P_{resin} values and the ratio estimated by Equation (4), $P_{\text{Mehlich-1}}$ values for
52 all stations in Quesada et al. (2010) were estimated ($P_{\text{m1_est}}$, expressed in mg kg^{-1}).
53 Table 2 shows the estimates obtained by Equations (1), (2), (3) and (4) for the 26 sites in
54 the Amazon.

55 Obtaining $P_{\text{m1_est}}$ values for locations where data for clay content and P_{total}
56 (mg kg^{-1}) were available, enabled the development of a linear regression model (Equation
57 5) that estimates P_{total} from $P_{\text{m1_est}}$ (mg kg^{-1}) and C (%) with $r = 0.639$.

$$58 \quad P_{\text{total}} = 72.4628 + 0.639 (P_{\text{m1_est}} - C) \quad R^2 = 0.408, (p < 0.001) \quad (5)$$

59 Although the R^2 value is low, the regression is significant at $p < 0.01$. The product
60 ($P_{\text{m1_est}} - C$) was used to correct the effect of soil clay contribution on $P_{\text{Mehlich-1}}$ values,
61 which tends to remove smaller amounts of P, for high values of clay. Applying the
62 Equation (5) to the observed data, P_{total} was estimated for 54 field samples collected in
63 Mato Grosso. These results are presented in Table S2 and were incorporated to the
64 regional dataset of Quesada et al. (2010). Depending on the spatial distribution of the
65 samples, the average for the P_{total} values was calculated inside each $1^\circ \times 1^\circ$ pixel.

66

67 **Table S1.** Phosphorus samples in P_{resin} and clay fraction of different plots in the Brazilian
68 Amazon from the database Quesada et al. (2010). Estimates made for obtaining $P_{-Mehlich-1}$
69 $_1$ values for the stations used in this study.

Observation data				Estimated data				
Quesada et al. (2010)				P_{rem}	CMAP	$\frac{P_{-Mehlich-1}}{P_{Adc}}$	$\frac{P_{resin}}{P_{-Mehlich-1}}$	P_{m1_est}
Plot	P_{resin}	P_{total}	Clay					
ID	mg kg ⁻¹	mg kg ⁻¹	%	mg L ⁻¹	mg kg ⁻¹	mg kg ⁻¹	mg kg ⁻¹	mg kg ⁻¹
'RIO-12'	3.42	178.96	9.50	43.7	404.2	0.27	1.23	2.79
'ELD-12'	5.34	173.59	20.1	35.1	486.9	0.21	1.40	3.80
'SCR-01'	2.36	65.85	6.88	46.0	384.9	0.28	1.18	1.99
'TIP-05'	9.01	437.32	37.3	23.4	637.6	0.15	1.71	5.27
'JRI-01'	1.30	189.13	80.7	7.15	1081	0.08	2.51	0.52
'JAS-02'	8.79	423.65	29.1	28.6	563.1	0.18	1.56	5.64
'CAX-01'	5.17	115.18	41.8	20.9	680.6	0.14	1.79	2.88
'MBO-01'	3.14	101.38	11.5	42.0	419.1	0.26	1.26	2.49
'BNT-04'	4.82	68.67	57.7	13.4	845.2	0.11	2.10	2.30
'TAP-04'	4.50	192.34	89.3	6.18	1136	0.08	2.60	1.73
'ALP-12'	7.37	86.62	14.0	40.0	437.9	0.24	1.30	5.67
'SUC-02'	4.06	349.81	37.2	23.5	636.7	0.15	1.71	2.38
'AGP-01'	2.99	303.28	42.6	20.4	688.8	0.14	1.81	1.66
'ZAR-03'	4.81	177.19	31.1	27.3	580.7	0.17	1.60	3.01
'TAP-123'	1.65	78.89	66.1	10.5	936.4	0.1	2.26	0.73
'ZAR-04'	7.48	54.15	18.3	36.5	471.8	0.22	1.37	5.45
'JUR-01'	10.6	331.93	36.6	23.8	631.2	0.16	1.70	6.22
'RST-01'	8.29	240.19	25.4	31.2	530.8	0.19	1.49	5.55
'ALF-01'	3.51	118.14	11.4	42.1	418.7	0.26	1.26	2.79
'DOI-01'	7.18	203.19	19.1	35.9	478.5	0.22	1.39	5.18
'SIN-01'	2.58	61.25	9.8	43.5	406.4	0.27	1.23	2.10
'TAM-01'	5.85	343.51	37.8	23.2	641.9	0.15	1.72	3.41
'CUZ-03'	11.5		42.5	20.5	687.4	0.14	1.80	6.35
'CRP-01'	21.8		18.1	36.7	470.1	0.22	1.37	15.9
'HCC-21'	7.34	289.76	25.6	31.0	532.4	0.19	1.50	4.90

70

71

72

73 **Table S2.** Phosphorus content data ($P_{\text{Mehlich-1}}$) and clay percentage for the 54 soil
74 samples collected in the Amazon-Cerrado transition region and P_{total} estimates.

Location				Physiognomy	Clay %	$P_{\text{Mehlich-1}}$ mg dm^{-3}	P_{total} mg dm^{-3}
Latitude	Longitude	n	pixel				
-15.55	-50.10	1	1	<i>Cerrado rupestre</i> ^a	30.6	0.89	89.87
-15.54	-50.10	2	1	<i>Cerrado típico</i> ^b	34.7	0.2	76.9
-14.17	-51.76	3	2	<i>Cerrado ralo</i> ^c	21.06	2.28	103.14
-14.17	-51.77	4	2	<i>Cerrado ralo</i> ^c	29.97	1.3	97.36
-14.15	-51.76	5	2	<i>Cerrado típico</i> ^b	40.53	2.93	148.35
-14.16	-51.77	6	2	<i>Cerrado típico</i> ^b	35.41	1.11	97.58
-14.71	-52.35	7	3	<i>Cerrado típico</i> ^b	35.84	3	141.17
-14.71	-52.35	8	3	<i>Cerrado típico</i> ^b	48.16	0.84	98.31
-14.71	-52.35	9	3	<i>Cerrado típico</i> ^b	49.33	0.42	85.7
-14.82	-52.17	10	3	Semi deciduous Forest	21.5	3.18	116.15
-14.71	-52.35	11	3	<i>Cerrado típico</i> ^b	17.28	0.34	76.22
-14.71	-52.35	12	3	<i>Cerrado típico</i> ^b	17.71	0.13	73.93
-14.70	-52.35	13	3	<i>Cerradão</i> ^d	21.04	0.26	75.96
-14.70	-52.35	14	3	<i>Cerradão</i> ^d	24.35	0.1	73.96
-14.69	-52.35	15	3	<i>Cerradão</i> ^d	21.03	5.46	145.83
-14.69	-52.35	16	3	<i>Cerradão</i> ^d	33.53	3.8	153.88
-14.69	-52.35	17	3	<i>Cerradão</i> ^d	40.47	1.9	121.6
-14.69	-52.35	18	3	<i>Cerradão</i> ^d	44.03	0.8	94.97
-14.69	-52.35	19	3	<i>Cerradão</i> ^d	45.24	0.3	81.13
-14.72	-52.36	20	3	Gallery Forest	15.02	0.87	80.81
-14.72	-52.36	21	3	Gallery Forest	10.45	6.94	118.8
-14.72	-52.36	22	3	Gallery Forest ^f	11.65	1.71	85.19
-13.10	-53.39	23	4	Riparian Forest ^f	43	26	786.86
-13.10	-53.39	24	4	Riparian Forest ^f	49	18	636.06
-13.00	-50.25	25	5	<i>Cerrado rupestre</i> ^a	4.44	2.44	79.39
-12.38	-50.93	26	6	<i>Campo de Murundus</i> ^g	39.33	2.3	130.27
-12.36	-50.93	27	6	<i>Campo de Murundus</i> ^g	29.52	3.3	134.71
-12.56	-50.92	28	6	<i>Campo de Murundus</i> ^g	22	3.3	118.85
-12.04	-50.73	29	6	<i>Campo de Murundus</i> ^g	38.48	0.7	89.67
-12.57	-50.91	30	6	<i>Campo de Murundus</i> ^g	39.11	1.7	114.95
-12.62	-50.82	31	6	<i>Campo de Murundus</i> ^g	25.56	2.4	111.66
-12.43	-50.72	32	6	<i>Campo de Murundus</i> ^g	29.11	2.3	115.25
-12.23	-50.77	33	6	<i>Campo de Murundus</i> ^g	30.77	2.3	117.69
-12.38	-50.94	34	6	<i>Campo de Murundus</i> ^g	37.46	5.2	196.93
-12.38	-50.94	35	6	<i>Campo de Murundus</i> ^g	39.34	4	173.02
-12.38	-50.93	36	6	open field ^f	32.45	1.6	105.64

Location				Physiognomy	Clay	P-Mehlich-1	P _{total}
Latitude	Longitude	n	pixel		%	mg dm ⁻³	mg dm ⁻³
-12.38	-50.93	37	6	open field ^f	20.78	2	99.02
-12.36	-50.93	38	6	open field ^f	17.08	1.6	89.93
-12.04	-50.73	39	6	open field ^f	22.83	0.8	84.13
-12.57	-50.91	40	6	open field ^f	24.95	0.7	83.62
-12.62	-50.82	41	6	open field ^f	20.77	2.2	101.66
-12.43	-50.72	42	6	open field ^f	19.55	1.6	92.45
-12.23	-50.77	43	6	open field ^f	27.03	1.9	105.28
-12.38	-50.94	44	6	open field ^f	29.93	3.1	131.75
-12.38	-50.94	45	6	open field ^f	30.75	0.9	90.15
-12.83	-52.35	46	7	Seasonal Evergreen Forest	49	-	141.54
-12.81	-51.85	47	8	Seasonal Evergreen Forest	16	-	117.03
-11.18	-50.23	48	9	<i>Cerrado denso</i> ^h	3.96	2.71	79.32
-11.18	-50.23	49	9	<i>Cerradão</i> ^d	4.16	1.66	76.88
-11.17	-50.23	50	9	<i>Cerrado típico</i> ^b	3.56	1.45	75.76
-11.86	-50.72	51	10	open field ^f	41.63	2	125.67
-11.86	-50.72	52	10	<i>Campo de Murundus</i> ^g	47.65	2.8	157.72
-9.11	-54.23	53	11	<i>Cerrado rupestre</i> ^a	4.56	4.17	84.61
-9.79	-50.43	54	12	Semi deciduous Forest	18.36	2.04	96.4

76 ^a**Cerrado rupestre**: a tree-shrub vegetation that grows in areas of accentuated topography with many rock
77 outcrops and shallow soils, where individual trees establish themselves in clefts in the rocks so that their
78 densities will vary as a function of the specific conditions of each site (Ribeiro and Walter, 2008).

79 ^b**Cerrado típico**: a vegetation of trees and shrubs fairly regular and usually not more tall (approximately
80 4m) (Ribeiro and Walter, 2008).

81 ^c**Cerrado ralo**: a vegetation that is more open than *Cerrado típico*; the trees not exceeding 2 to 3 meters in
82 height, covering from 5 to 20% of the soil (Ribeiro and Walter, 2008).

83 ^d**Cerradão**: a dense and tall woodland formation (Ribeiro and Walter, 2008).

84 ^g**Campo de Murundus**: a typical landscape of Central Brazil characterized by countless rounded earth
85 mounds (the '*murundus*'), which are covered by woody '*Cerrado*' vegetation and are found scattered over
86 a grass-covered surface (the '*campo*') (Ribeiro and Walter, 2008).

87 ^h**Cerrado denso**: this vegetation is more dense than *Cerrado típico*; the trees exceeding 2 to 3 meters in
88 height, and covered with a woody cover ranging from 10 to 60% (Ribeiro and Walter, 2008).

89

90 Difference between the global P_{total} map and regional P_{total} map (PG-PR)

91 The spatial difference of the soil phosphorus content between the global P_{total} map

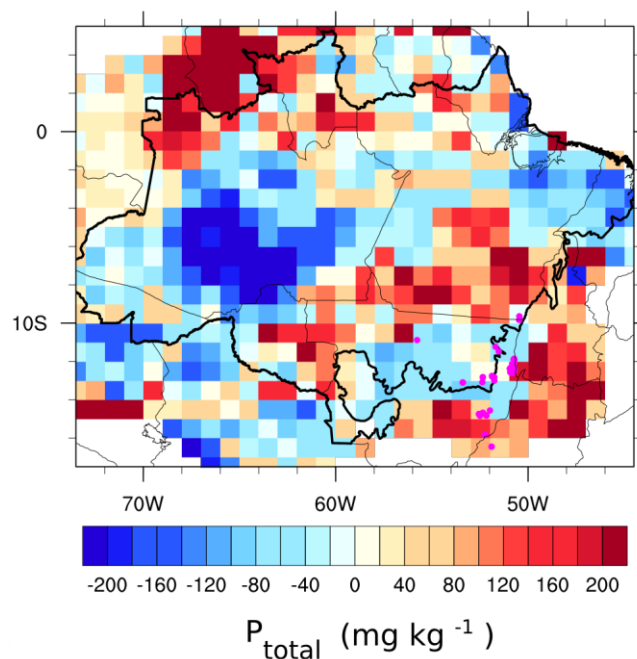
92 (PG) and the regional map (PR) showed that the global data underestimates the P_{total}

93 values in some Amazon-Cerrado transitional areas, mainly in western Amazonia. PG

94 overestimates are observed in northern Amazonia and in most of the Cerrado biome area.

95 The differences between the absolute values of total phosphorus at a spatial resolution of

96 $1^\circ \times 1^\circ$ varied in the range of $\pm 180 \text{ mg kg}^{-1}$, with an average of 24.19 mg kg^{-1} (Figure
97 S1).



98

99 **Figure S1.** Difference between the global P_{total} map (Yang et al., 2013) and
100 regional P_{total} map (PG-PR) in mg kg^{-1} . The thick black line delimits the Amazon and
101 Cerrado biomes.

102

103 **References**

104 Alves, M. E. and Lavorenti, A.: Remaining Phosphorus Estimate Through
105 Multiple Regression Analysis, *Pedosphere*, 16(5), 566–571, doi:10.1016/S1002-
106 0160(06)60089-1, 2006.

107 Bahia Filho, A. F. C.: Índices de disponibilidade de fósforo em latossolos do
108 Planalto Central com diferentes características texturais e mineralógicas, Ph.D thesis,
109 Federal University of Viçosa, Brazil, 178pp., 1982.

110 Bognola, I. A.: Caracterização química, física e mineralógica de solos
111 intermediários entre Latossolos Brunos e Latossolos Roxos, M.S thesis, Federal
112 University of Viçosa, Brazil, 205pp., 1995.

113 Campello, M. R., Novais, R. F., Fernandez, R. I. E., Fontes, M. P. F. and Barros,
114 N. F.: Avaliação da reversibilidade de fósforo não-lábil para lábil em solos com diferentes
115 características, Rev. Bras. Ciência do Solo, 18, 157–165, 1994.

116 Fabres, A. S.: Disponibilidade de fósforo em solos e concentrações críticas de
117 diferentes frações de fósforo em plantas de alface cultivadas em amostras de diferentes
118 solos, M.S thesis, Federal University of Viçosa, Brazil, 39pp., 1986.

119 Freire, F. J.: Sistema para cálculo do balanço nutricional e recomendação de
120 corretivos e fertilizantes para cana-de-açúcar, Ph.D thesis, Federal University of Viçosa,
121 Brazil, 144pp., 2001.

122 Gonçalves, J. L. M.: Cinética de transformação de fósforo lábil em não lábil em
123 amostras de solos de cerrado, M.S thesis, Federal University of Viçosa, Brazil, 62pp.,
124 1988.

125 Ker, J. C.: Mineralogia, sorção e dessorção de fosfato, magnetização e elementos
126 traços de Latossolos do Brasil, Ph.D thesis, Federal University of Viçosa, Brazil, 181pp.,
127 1995.

128 Muniz, A. S.: Disponibilidade de fósforo avaliada por extratores químicos e pelo
129 crescimento de soja (*Glycine max* (L.) Merrill) em amostras de solo com diferentes
130 valores do fator capacidade, M.S thesis, Federal University of Viçosa, Brazil, 79pp.,
131 1983.

132 Neves, J. C. L.: Produção e partição de biomassa, aspectos nutricionais e hídricos
133 em plantios clonais de eucalipto na região litorânea do Espírito Santo, Ph.D thesis, State
134 University of North Fluminense, Brazil, 191pp., 2000.

135 Novelino, J. O.: Disponibilidade de fósforo e sua cinética em solos sob cerrado
136 fertilizados com fósforo, avaliada por diferentes métodos de extração, Ph.D thesis,
137 Federal University of Viçosa, Brazil, 70pp., 1999.

138 Paula, J. R.: Avaliação da disponibilidade de fósforo por extratores orgânicos em
139 latossolos de Minas Gerais, M.S thesis, Federal University of Viçosa, Brazil, 58pp., 1993.

140 Quesada, C. A., Lloyd, J., Schwarz, M., Patiño, S., Baker, T. R., Czimeczik, C.,
141 Fyllas, N. M., Martinelli, L., Nardoto, G. B., Schmerler, J., Santos, a. J. B., Hodnett, M.
142 G., Herrera, R., Luizão, F. J., Arneith, A., Lloyd, G., Dezzeo, N., Hilke, I., Kuhlmann, I.,
143 Raessler, M., Brand, W. A., Geilmann, H., Filho, J. O. M., Carvalho, F. P., Filho, R. N.
144 A., Chaves, J. E., Cruz, O. F., Pimentel, T. P. and Paiva, R.: Variations in chemical and
145 physical properties of Amazon forest soils in relation to their genesis, *Biogeosciences*, 7,
146 1515–1541, doi:10.5194/bg-7-1515-2010, 2010.

147 Ribeiro, J. F. and Walter, B. M. T.: As Principais Fitofisionomias do bioma
148 Cerrado, in *Cerrado: ecologia e flora*, pp. 153–212, 2008.

149 Yang, X., Post, W. M., Thornton, P. E. and Jain, A.: The distribution of soil
150 phosphorus for global biogeochemical modeling, *Biogeosciences*, 10, 2525–2537,
151 doi:10.5194/bg-10-2525-2013, 2013.

152

153