

Effects of climate change and land management

M. Stergiadi et al.

Effects of climate change and land management on soil organic carbon dynamics and carbon leaching in Northwestern Europe

M. Stergiadi¹, M. van der Perk¹, A. C. M. de Nijs², and M. F. P. Bierkens^{1,3}

¹Department of Physical Geography, Faculty of Geosciences, Utrecht University, Heidelberglaan 2, 3584 CS Utrecht, the Netherlands

²National Institute for Public Health and the Environment (RIVM), P.O. Box 1, 3720 BA Bilthoven, the Netherlands

³Unit Soil and Groundwater Systems, Deltares, Princetonlaan 6, 3584 CB Utrecht, the Netherlands

Received: 3 October 2015 – Accepted: 23 November 2015 – Published: 10 December 2015

Correspondence to: M. van der Perk (m.vanderperk@uu.nl)

Published by Copernicus Publications on behalf of the European Geosciences Union.

Title Page

Abstract

Introduction

Conclusions

References

Tables

Figures



Back

Close

Full Screen / Esc

Printer-friendly Version

Interactive Discussion



Abstract

Climate change and land management practices are projected to significantly affect soil organic carbon (SOC) dynamics and dissolved organic carbon (DOC) leaching from soils. In this modelling study, we adopted the Century model to simulate past (1906–2012), present, and future (2013–2100) SOC and DOC levels for sandy and loamy soils typical for Northwestern European conditions under three land use types (forest, grassland and arable land) and several future scenarios addressing climate change and land management change. To our knowledge, this is the first time that the Century model has been applied to assess the effects of climate change and land management on DOC concentrations and leaching rates, which, in combination with SOC, play a major role in metal transport through soil. The simulated current SOC levels were generally in line with the observed values for the different kinds of soil and land use types. The climate change scenarios result in a decrease in both SOC and DOC for the agricultural systems, whereas for the forest systems, SOC is projected to slightly increase and DOC to decrease. An analysis of the sole effects of changes in temperature and changes in precipitation showed that, for SOC, the temperature effect predominates over the precipitation effect, whereas for DOC, the precipitation effect is more prominent. A reduction in the application rates of fertilizers under the land management scenario leads to a decrease in the SOC stocks and the DOC leaching rates for the arable land systems, but has a negligible effect on SOC and DOC levels for the grassland systems. Our study demonstrated the ability of the Century model to simulate climate change and agricultural management effects on SOC dynamics and DOC leaching, providing a robust tool for the assessment of carbon sequestration and the implications for contaminant transport in soils.

BGD

12, 19627–19671, 2015

Effects of climate change and land management

M. Stergiadi et al.

[Title Page](#)

[Abstract](#)

[Introduction](#)

[Conclusions](#)

[References](#)

[Tables](#)

[Figures](#)



[Back](#)

[Close](#)

[Full Screen / Esc](#)

[Printer-friendly Version](#)

[Interactive Discussion](#)



1 Introduction

Soil organic carbon (SOC) is an important component of the global carbon cycle, as it is one of the largest carbon reservoirs that exchanges actively with atmospheric carbon dioxide at time scales of human concern (Schimel, 1995; Baldock, 2007). Its paramount role in soil fertility and soil biodiversity has been recognised in many studies and its management is a critical factor for crop production (Reeves, 1997; Schlesinger, 2000). Moreover, soil organic matter (SOM) and dissolved organic carbon (DOC) can affect the transport of toxic substances, like heavy metals, through soil (Sauvé et al., 2000; Römken et al., 2004; Unamuno et al., 2009; Groenenberg et al., 2012).

The major role of soil organic matter in metal mobility has been demonstrated by many studies (Elliott et al., 1986; Driscoll et al., 1988; Sauvé et al., 2000), as it promotes metal sorption in soil, thereby reducing metal bioavailability (Impellitteri et al., 2002). On the other hand, DOC has been associated with reduced metal retention, thus with facilitated metal transport in soil through the formation of organo-metallic complexes in the soil solution (Guisquiani et al., 1998; Römken et al., 1999; Dijkstra et al., 2004). Climate- and land management-induced changes in SOC and DOC levels can be associated with the transport of heavy metals, as well as pathogenic microorganisms, ultimately affecting the exposure of humans and ecosystems to these contaminants (Schijven and De Roda Husman, 2005).

Climate parameters have been proven to play a crucial role in the soil mechanisms controlling SOC decomposition (Jenny, 1980; Paul, 1984; Trumbore et al., 1996; Baldock, 2007; Conant et al., 2008; Álvaro-Fuentes et al., 2012a) and DOC leaching from soil (Harrison et al., 2008). Global Climate Models (GCMs) project the global mean temperature to increase by 1 to 6 °C for the year 2100, compared to 1990 (IPCC, 2007). Most probably, the average temperature in Europe will increase slightly more rapidly than the world average, with winter temperatures increasing faster than the world average in northern Europe and summer temperatures increasing faster than the world average in southern Europe (IPCC, 2007). The projected rainfall patterns show seasonal

Effects of climate change and land management

M. Stergiadi et al.

[Title Page](#)

[Abstract](#)

[Introduction](#)

[Conclusions](#)

[References](#)

[Tables](#)

[Figures](#)



[Back](#)

[Close](#)

[Full Screen / Esc](#)

[Printer-friendly Version](#)

[Interactive Discussion](#)



variation across Europe, with wetter winters for northern Europe and dryer summers for southern Europe (IPCC, 2007; Christensen et al., 2011).

The response of SOC contents to climate change has been widely investigated at the regional (Liski et al., 2002; Smith et al., 2005, 2006; Álvaro-Fuentes et al., 2012a) and the global scale (Schlesinger and Andrews, 2000; Cramer et al., 2001; Davidson and Janssens, 2006; Gottschalk et al., 2012). Both positive (Liski et al., 2002; Álvaro-Fuentes et al., 2012a; Gottschalk et al., 2012) and negative responses (Cramer et al., 2001; Smith et al., 2005) have been reported. Changes in temperature-mediated DOC draining from soil have been suggested as a potential factor influencing DOC concentration in rivers (Worrall et al., 2003). Alterations of hydrological parameters due to climate change have also been associated with changes in DOC leaching through the soil profile, indicating that changes in the precipitation patterns can strongly influence the leaching rates of DOC (Tranvik et al., 2002; Harrison et al., 2008).

Land management practices have been recognised as propitious strategies for counterbalancing the anthropogenic carbon dioxide emissions through SOC sequestration (Burke et al., 1995; Paustian et al., 1997b; Post et al., 1999; Lal, 2004). The use of fertilizers has been associated with enhanced carbon sequestration in agricultural soils due to increased crop production and associated carbon inputs into the soil (Paustian et al., 1997a; Lal, 2004; Álvaro-Fuentes et al., 2012b). However, climate conditions, soil type and land management can strongly influence the systems' response to fertilization (Glendining and Powlson, 1991; Alvarez, 2005), resulting in ambiguous effects of fertilization on SOC levels (Khan et al., 2007; Reid, 2008).

Alvarez (2005) reviewed published data from field experiments worldwide in order to evaluate the effects of nitrogen fertilization on SOC levels. He observed both positive and negative responses of SOC to nitrogen fertilizers. Paustian et al. (1996) suggested that land management was an essential factor determining SOC dynamics under changing climate in the USA. Their SOC projections for agricultural systems under climate change and land management change scenarios revealed that management practices had a greater influence on SOC levels than climate change. The number of

BGD

12, 19627–19671, 2015

Effects of climate change and land management

M. Stergiadi et al.

Title Page

Abstract

Introduction

Conclusions

References

Tables

Figures



Back

Close

Full Screen / Esc

Printer-friendly Version

Interactive Discussion



studies concerning the effects of fertilization on DOC is limited. Ruark et al. (2009) and Walmsley et al. (2011) suggested that changes in the fertilization rates caused no influence on DOC leaching from soil. In contrast, Adams et al. (2005) found a potential increase in DOC leaching through the soil profile caused by nitrogen fertilization treatments in forest systems. Apart from climate and land management, land use history is a critical factor determining SOC stocks. The response of SOC to land use change is rather slow due to the slow SOC turnover of the major SOC pools (Verheyen et al., 1999; Sonneveld et al., 2002; Schulp and Verburg, 2009).

The above studies show that the response of SOC and DOC to climate change and land management is complex and equivocal and it depends on a variety of factors including soil properties and land use history. Therefore, for a realistic assessment of SOC and DOC levels and possible changes therein, these factors should be taken into account.

This study aims to assess the effects of climate change and land management on SOC accumulation, SOC distribution across different pools and DOC leaching for Northwestern European conditions. For this purpose, we used the Century model (Parton et al., 1987, 1988, 1993) to simulate past (1906–2012), present, and future (2013–2100) SOC and DOC levels in sandy and loamy soils under three generalized land use types (forest, grassland, and arable land), typical for the Quaternary fluvial, glacial and aeolian deposits in Northwestern Europe. For the simulation of future development of SOC and DOC levels, we adopted four future climate scenarios of the Royal Dutch Meteorological Institute (KNMI, 2006) and a land management scenario. The climate scenarios project average temperatures to rise and seasonal patterns of precipitation to change resulting in dryer summers and wetter winters in the Netherlands and surrounding countries. The land management scenario accounted for the implementation of the EU guidelines concerning the maximum levels of nutrients added to the soil (Alterra, 2011). To our knowledge, this is the first time that the Century model has been applied to assess the effects of climate change and land management on DOC in soil.

Effects of climate change and land management

M. Stergiadi et al.

Title Page

Abstract

Introduction

Conclusions

References

Tables

Figures



Back

Close

Full Screen / Esc

Printer-friendly Version

Interactive Discussion



2 Materials and methods

2.1 Model description

The key mechanisms that control organic matter dynamics in soil can be adequately simulated by computer models (Paustian et al., 1992). The Century model, developed by Parton et al. (1987, 1988, 1993) is one of the most commonly used soil organic matter models worldwide. Century is a process-based biogeochemical model that simulates the dynamics of carbon (C), nitrogen (N), phosphorus (P) and sulfur (S) through an annual cycle to millennia in the top 20 cm of the soil profile. The model has different plant production submodels for grassland/agricultural land and for forest systems, both linked to a common soil organic matter submodel, allowing the simulation of a wide range of natural and cultivated systems such as grassland, arable land, forest and savanna systems. A water budget submodel is incorporated to calculate water loss and fluxes. The various submodels that constitute the Century model have been described in detail by Parton et al. (1987, 1988, 1993) and Metherell et al. (1993). For this study, we applied version 4.6 of the Century model.

The model runs on a monthly time step, requiring input information on climate (temperature and precipitation), soil properties (soil texture, soil pH, bulk density, field capacity, wilting point, initial organic and mineral soil C, N, P, and S) and plant chemistry characteristics (e.g. lignin content, nutrient content). Management practices (e.g. cropping, fertilization, cultivation, grazing, irrigation) and abrupt events (e.g. fire, tree removal) can also be included in the model.

In the Century model, soil organic matter and plant residues are partitioned into different conceptual pools according to their potential decomposition rate. These pools do not fully correspond with analytical soil organic matter fractions based on physical or chemical properties (Metherell et al., 1995). Surface litter and root litter are divided into structural (resistant to decomposition) and metabolic (easily decomposable) material, depending on their lignin to nitrogen ratio. In the Century 4.6 model, soil organic matter partitions among two surface pools (an active pool, with a turnover time of several

years, and a slow pool, with a turnover time of 20–50 years) and three soil pools (active, slow and passive, with the latter having a turnover time of 400–2000 years). The actual turnover rates of these pools are a function of soil temperature, soil moisture, soil pH, cultivation effects and, for the active pool, soil texture. Part of the decomposition of the active pool is lost as soluble organic material (i.e. DOC).

2.2 Model input and calculations

In this study, the Century model was used to simulate past (1906–2012), present and future (2013–2100) SOC and DOC levels in sandy and loamy soils under three generalized land use types (grassland, arable land, and forest). The soil properties, land use types, and land management practices were selected to reflect ecosystems typical for Northwestern European conditions. For the purposes of this study, the simultaneous cycles of C, N and P were considered. Table 1 shows the model input values regarding soil properties. Preliminary model calculations showed that the simulated SOC levels were especially sensitive to soil pH values. Therefore, additional model runs were performed for the simulated systems with soil pH values increased by 0.2 pH units to assess the sensitivity of the simulated SOC levels to changes in soil pH.

To estimate the initial conditions with respect to SOC, N and P levels in soil and the partitioning across the various pools in 1906, the Century model was run for the period from 800 AD onwards as a spin-up period, thereby taking into account the effects of land use history on the current and future SOC and DOC levels. This period was chosen because the different land use systems have resulted from a change in land use from deciduous forest to agricultural land or heathland (the latter only on sandy soils) that took place at around 800 AD due to increasing population growth (Spek, 2004; Kaplan et al., 2009; Bouman et al., 2013). To initialize the model simulations for the different land use types in 800 AD, the forest submodel was applied for a period of several thousands of years to estimate the equilibrium levels of soil organic matter (C, N, and P) for the native deciduous forest system without any natural or anthropogenic disturbances, such as fire or logging. We assumed that the simulated systems have not

Effects of climate change and land management

M. Stergiadi et al.

Title Page

Abstract

Introduction

Conclusions

References

Tables

Figures



Back

Close

Full Screen / Esc

Printer-friendly Version

Interactive Discussion



undergone land use changes since 800 AD, except for the forest system on sandy soils. This system was simulated as a heathland system for the period 800–1905, before it was converted to coniferous forest around 1900 (CBS, 2014a).

Figure 1 provides an overview of the simulated periods of time (Blocks) and the scheduled land management events for the different land use types. Each block in the Century model represents a period of time within which climate parameters and land management practices were left unchanged. Model input concerning past and present land management practices was based on the Dutch Central Bureau for Statistics (CBS, 2014b) and expert judgement.

For the heathland system on sandy soil during the model spin-up period (Block 1), the event scheduling included grazing and removal of aboveground biomass to be used as fertilizer in the sandy arable land system. The latter was simulated as harvesting in order to imitate the litter layer removal, which nevertheless cannot be fully accounted for in the Century model.

In the grassland systems on both soil types, organic matter addition was simulated using the default straw manure option with a rate of $300 \text{ gm}^{-2} \text{ yr}^{-1}$. The simulated grazing intensity was considered to gradually increase in the course of time, being low (no direct effect on biomass production) for the period 800–1905 (Block 1; model spin-up period), moderate (linear effect on biomass production) for the period 1906–1950 (Block 2), and high (quadratic effect on biomass production) for the period 1951–2012 (Block 3). Application of mineral fertilizers was accounted for after 1950, equalling to $300 \text{ kg ha}^{-1} \text{ yr}^{-1}$ nitrogen and $40 \text{ kg ha}^{-1} \text{ yr}^{-1}$ phosphorus.

In the arable land systems, the simulated organic fertilizers' addition varied for the two different soil types. For the sandy soil system, the organic fertilizers addition for the period 800–1905 (Block 1; model spin-up period) was simulated as a mixture of straw manure and heath plaggen originating from sod cutting in the heathland system (Schulp and Verburg, 2009), as mentioned above. Until the beginning of the 20th century, the amount of organic matter added in this system was $520 \text{ gm}^{-2} \text{ yr}^{-1}$ (Schulp and Verburg, 2009). Based on the default lignin content of straw manure (25%) and

Effects of climate change and land management

M. Stergiadi et al.

Title Page

Abstract

Introduction

Conclusions

References

Tables

Figures



Back

Close

Full Screen / Esc

Printer-friendly Version

Interactive Discussion



the simulated lignin content of heather litter, the lignin content of the organic mixture was estimated to be 43 %. For the sandy arable land system after 1905, as well as for the loamy soil system for the entire simulation period, the simulated manure added consisted only of straw manure, amounting to nearly 30 % of the amount added in the grassland systems.

For the arable land systems on both soil types, two-year crop rotation schemes consisting of wheat and potatoes were considered until the first half of the 20th century (Blocks 1 and 2), whereas for the period after that (1952–2011), four-year crop rotation schemes also including sugar beets and maize were simulated (CBS, 2014b). Application of mineral fertilizers in these systems was introduced at the beginning of the 20th century, with mineral nitrogen amounts increasing by a factor of 10 after 1950 and mineral phosphorus increasing by a factor of 2, reaching a value of 150 and 40 kg ha⁻¹ yr⁻¹, respectively (Knibbe, 2000). Tillage practices in these systems consisted of annual ploughing, which caused an increase in soil organic matter decomposition by a factor 1.6 during the month of cultivation (February).

Meteorological data (minimum and maximum monthly temperatures, monthly precipitation rates) were based on monitoring data from the Royal Dutch Meteorological Institute (KNMI) for the period 1925–2012. The climate reconstruction for the model initialization (before 800 AD), as well as for the model simulations for the period 800–1905 (spin-up period), was based on scaling factors calculated by data reported by Brandsma and Buishand (1996) and Van Engelen et al. (2001) (Table S1 in the Supplement). For the period before 1905, the model was forced by repeated mean minimum and maximum temperatures for every year and stochastically generated precipitation from a skewed distribution. For the period 1906–2012, actual weather data from the KNMI were used.

The most important Century model outputs include total SOC levels, SOC fractionation in different pools in the top 20 cm of the soil profile and DOC leaching from this soil layer. The simulated current SOC levels were compared to observed SOC values derived from various Dutch soil databases (Province of Noord-Brabant, 1996; Bodem-

BGD

12, 19627–19671, 2015

Effects of climate change and land management

M. Stergiadi et al.

Title Page

Abstract

Introduction

Conclusions

References

Tables

Figures



Back

Close

Full Screen / Esc

Printer-friendly Version

Interactive Discussion



data, 2014; RIVM, 2014), taking into account the different soil depths the simulated and observed values referred to.

2.3 Climate change and land management change scenarios

2.3.1 Climate change scenarios

5 Based on research outcomes concerning global temperature changes and changes in atmospheric circulation over Western Europe, the Royal Dutch Meteorological Institute (KNMI, 2006) developed four future climate scenarios for the Netherlands, which are considered to comprise the possible range of future climate change (Van Den Hurk et al., 2006). These scenarios were evaluated in 2009 by testing the models in line with
10 more recent national and international scientific advances and were found to be still representative of the most likely anticipated climate changes (KNMI, 2009).

The expected changes until the end of the 21st century, as projected by the KNMI (2006) for the Netherlands, comprise of:

- rising air temperature;
- 15 – wetter winters with increased precipitation amounts;
- hotter and dryer summers with increased intensity of extreme rain showers and less rainy days;
- small changes in wind in comparison to the natural fluctuations.

20 The scenarios selected for the purpose of this study consisted of the G+ and W+ scenarios, which refer to the more extreme future predictions that concern important change in air circulation patterns. According to the G+ scenario (corresponding to representative concentration pathway scenario RCP2.6 according to Van Vuuren et al., 2011), the changes in 2100 compared to the year 1990 involve a global temperature rise by 2 °C. The winter average temperature is projected to increase by 2.3 °C and the

Effects of climate change and land management

M. Stergiadi et al.

Title Page

Abstract

Introduction

Conclusions

References

Tables

Figures



Back

Close

Full Screen / Esc

Printer-friendly Version

Interactive Discussion



winter average precipitation will increase by about $+7\% \text{ } ^\circ\text{C}^{-1}$. In summer, the average temperature will increase by $2.8 \text{ } ^\circ\text{C}$ and the summer average precipitation will decrease by about $-7\% \text{ } ^\circ\text{C}^{-1}$. More radical changes are projected within the W+ scenario (corresponding to representative concentration pathway scenario RCP6.0 according to Van Vuuren et al., 2011), including global temperature rise by $4 \text{ } ^\circ\text{C}$ ($+4.6 \text{ } ^\circ\text{C}$ in winter, $+5.6 \text{ } ^\circ\text{C}$ in summer) and seasonal precipitation changes same as in the G+ scenario.

To obtain a continuous time series of mean monthly temperature and precipitation for the period 2013–2100 (W+ cc T , P and G+ cc T , P scenarios), the historic time series for the 10 year period around 1990 (1985–1994) were transformed according to the G+ and the W+ KNMI'06 scenarios for successive 10 year periods from 2020 to 2100. The mean monthly minimum and maximum temperatures were calculated from the mean monthly temperatures using a regression relation established for the period 1990–2012.

To identify the individual effects of temperature and precipitation on SOC levels and DOC leaching rates, as well as the effects of no change in climate, three more scenarios involving no climate change (No cc), changes only in temperature (W+ cc T) and changes only in precipitation (W+ cc P), were run. The no-climate-change scenario data were derived from transforming the 10 year time series around 1990 to 2010 and using this time series for the subsequent decades until 2100. Overview of the annual averages for total precipitation and mean minimum and mean maximum temperatures for the period 2013–2100 and for the different climate change scenarios, is given in Table 2. In these simulations for the agricultural systems under the climate change scenarios, the land management practices were constant for the period 1951–2100.

2.3.2 Land management change scenarios

For both the grassland systems and the arable land systems, the land management change scenarios (G+ cc RF and W+ cc RF) were related to a change in the application rates of organic and inorganic fertilizers under the G+ and W+ climate change

BGD

12, 19627–19671, 2015

Effects of climate change and land management

M. Stergiadi et al.

Title Page

Abstract

Introduction

Conclusions

References

Tables

Figures



Back

Close

Full Screen / Esc

Printer-friendly Version

Interactive Discussion



scenarios, respectively. For the two systems, the future (2013–2100) application rate for nitrogen via manure was kept the same as in the period 1951–2012, while the application rate for phosphorus was reduced by 20 % due to declining phosphorus levels in fodder (LTO, 2013). The inorganic nitrogen fertilization rate for the period 2013–2100 was reduced by nearly 60 % in the grassland systems and by nearly 20 % in the arable land systems in comparison to the rates in the period 1951–2012. The simulated reductions were made in order to comply with the nitrogen application standards provided by the Dutch Ministry of Economic Affairs, Agriculture and Innovation (2011), which are based on the EU Nitrates Directive (Commission of the European Communities, 1991) concerning the protection of waters against pollution caused by nitrates from agricultural sources.

The projected total phosphorus application rates on agricultural land was based on the EU Common Agricultural Policy (Alterra, 2011) and equalled the amount of phosphorus that is being removed, either by grazing or harvest. Preliminary Century model results for the present conditions in the grassland systems showed that the amount of phosphorus returned to the soil during grazing was nearly equal to the amount of phosphorus removed by standing dead and live shoots by livestock. For this reason and for the future scenarios in these systems, no phosphorus via artificial fertilizers was added. Following the same procedure for the arable land systems, the amount of phosphorus added via inorganic fertilizers in the future simulations was reduced by almost 80 %.

3 Results and Discussion

3.1 Historic development

The simulation results regarding the development of the major SOC pools (0–20 cm) for the period 1906–2012 and for the different land use types and soil types are presented in Fig. 2 (plot data are given in Tables SF1–SF6 in the Supplement). Figure 3 shows

BGD

12, 19627–19671, 2015

Effects of climate change and land management

M. Stergiadi et al.

Title Page

Abstract

Introduction

Conclusions

References

Tables

Figures



Back

Close

Full Screen / Esc

Printer-friendly Version

Interactive Discussion



Effects of climate change and land management

M. Stergiadi et al.

Title Page

Abstract

Introduction

Conclusions

References

Tables

Figures



Back

Close

Full Screen / Esc

Printer-friendly Version

Interactive Discussion



the trends for DOC concentrations for the same systems (plot data are given in Tables SF7–SF12). For the period 1906–2012, SOC levels (Fig. 2) and DOC concentrations (Fig. 3) show contrasting trends for the different soil and land use types, with strong interannual variations for the DOC concentrations. SOC and DOC levels in grassland systems remained nearly constant throughout the period 1906–2012, with average values around 1.16 % for SOC and 9.3 mg L^{-1} for DOC for the system on sandy soil and 1.52 % SOC and 4.4 mg L^{-1} DOC for the system on loamy soil. In the first half of the 20th century, SOC and DOC levels in the arable land system on sandy soil decreased significantly from 2.41 to 1.30 % for SOC, with a further decline to 1.02 % in 2012, and from 21.0 to 15.0 mg L^{-1} for DOC during the entire period 1906–2012. In the arable land system on loamy soil, both SOC and DOC showed an increasing trend from 0.90 to 1.32 % for SOC and from 5.0 to 7.0 mg L^{-1} for DOC for the period 1906–2012. The SOC levels in the forest system on sandy soil also showed an increasing trend from 2.60 to 2.86 %, whereas the SOC levels in the forest system on loamy soil remained constant at a level just above 0.63 %. DOC concentrations for the forest system on sandy soil decreased considerably from 20.0 to 3.0 mg L^{-1} during the period 1906–1920, remaining nearly constant for the period after 1920, whereas for the forest system on loamy soil, DOC shows a steady trend at around 1.7 mg L^{-1} . In both the arable land system and the forest system on sandy soil, the SOC levels did not seem to have reached equilibrium conditions by 2012.

The significant decline in SOC and DOC in the sandy arable land system just after 1900 (Figs. 2 and 3) can mainly be attributed to the drastic reduction in the application rate of manure by almost 80 % around 1900. In contrast, the application of manure in the arable land system on loamy soil remained constant throughout the simulation period. The increase in SOC and DOC in this system at the beginning of the 20th century was mainly caused by the introduction of artificial fertilizers (Figs. 2 and 3). The application of artificial fertilizers in the grassland systems and the arable land systems after 1950 caused no notable alterations in the SOC and DOC levels.

The increase in SOC levels in the sandy forest system can be mainly associated with the change in land use from heathland to forest that took place around 1900. This change in land use also gave rise to a sharp decline in DOC concentrations for the sandy forest system at the beginning of the 20th century.

For all systems, the simulated total SOC levels remained nearly constant from about 1980. Only slight total SOC gains were simulated for the grassland systems and for the forest system on sandy soil, whereas negligible total SOC losses were simulated for the arable land systems and for the forest system on loamy soil. These gains and losses in SOC levels were in the order of $2\text{--}27 \text{ mg kg}^{-1} \text{ yr}^{-1}$.

Our outcomes are in line with previous observational studies (Reijneveld et al., 2009; Hanegraaf et al., 2009) and model studies (Vleeshouwers and Verhagen, 2002), which reported on average small SOC decreasing trends for arable lands and small increasing trends for grasslands. Our study showed that this latter trend is also true for forest systems on sandy soils and that, opposed to reports raising concerns regarding SOC losses in European agricultural soils, like e.g. in Belgium (Sleutel et al., 2003; Meersmans et al., 2009), Norway (Riley and Bakkegard, 2006), south Germany (Capriel, 2013) and Finland (Heikkinen et al., 2013), the risk for significant SOC decline in sandy and loamy soils in Northwestern Europe is low.

3.2 Current levels

Figure 2 shows that the simulated current SOC levels for the grassland systems were higher than for the arable land systems, whereas the highest SOC levels among all systems were predicted for the forest system on sandy soil. The lowest SOC levels were predicted for the forest system on loamy soil. DOC concentrations were found to be higher in the agricultural systems and especially in the arable land systems (Fig. 3). For all systems, the largest amount of total SOC is present in the slow pool, followed by the passive pool (Table 3). The significantly large passive pool simulated for the arable land system on sandy soil is associated with the historic land management practices for this system, with application of vast amounts of organic fertilizers (straw manure

19640

BGD

12, 19627–19671, 2015

Effects of climate change and land management

M. Stergiadi et al.

Title Page

Abstract

Introduction

Conclusions

References

Tables

Figures

◀

▶

◀

▶

Back

Close

Full Screen / Esc

Printer-friendly Version

Interactive Discussion



and heath plaggen). For the forest systems, nearly all of the SOC resides in the slow pool.

The results of the pH-sensitivity analysis show that an increase in soil pH by 0.2 pH units lead to a decline in total SOC for all systems (Table 4), with the decrease being more pronounced for the forest systems and the agricultural systems on sandy soil, which are more acidic. The reduction in total SOC is related to a reduction in the size of the slow pool. The passive pool, consisting of recalcitrant material that turns over very slowly, remains nearly constant for all cases, also under changing soil pH and fertilizers application rates.

Direct comparison between the simulated SOC levels and observed values derived by various Dutch soil databases for the different land use types and soil types, without further interpretation, shows that the Century model seems to systematically underestimate the observed SOC levels, in many cases by a factor of around 2 (Table 5). Only the simulated SOC values for the loamy arable land system and the sandy forest system are within the measured ranges. The underestimation of SOC levels in the sandy arable system could be the result of an overestimation of the decomposition rates of organic matter derived from heath plaggen. The underestimation of the SOC levels in the loamy forest system may be attributed to the variability in soil pH. The soil pH of loamy forest systems appears to be particularly variable (Bodemdata, 2014) and the SOC values are particularly sensitive to soil pH in forest systems (Fig. 2, Table 4).

However, the differences between simulated and observed values can in most cases be explained by the different soil depths the simulated and observed values refer to (20 and 10 cm, respectively). In most soils under grassland, the majority of SOC is present in the top 10 cm (De Bakker, 1979), but the Century model does not account for SOC variations within the top 20 cm of the soil. In contrast, the SOC distribution within the soil profile of arable land systems can be assumed to be quite homogenous in the top 20 cm of soil due to ploughing (De Bakker, 1979). Taking into account the effect of SOC distribution across the top 20 cm of the soil, the majority of the simulated values are within or close to the measured ranges. The simulated current DOC concentrations

BGD

12, 19627–19671, 2015

Effects of climate change and land management

M. Stergiadi et al.

Title Page

Abstract

Introduction

Conclusions

References

Tables

Figures

⏪

⏩

◀

▶

Back

Close

Full Screen / Esc

Printer-friendly Version

Interactive Discussion



also fall within the ranges reported in literature for agricultural and forest sites for soil depths ranging from 15 to 50 cm (Michalzik et al., 2001; Neff and Asner, 2001; Kindler et al., 2011).

3.3 Future scenarios

3.3.1 Climate change scenarios

Simulated SOC contents and DOC concentrations for the three systems show different trends for the different climate change scenarios (Tables 6–8, Fig. 4, plot data for Fig. 4 can be found in Tables SF13–SF18). For the simulation period (2013–2100), the model predicted SOC losses for the agricultural systems and SOC gains for the forest systems. With two exceptions (the sandy arable land system and the sandy forest system), the model results for the no-climate-change scenario (No cc) show rather steady SOC levels. Apparently, the invariable climate and land management under this scenario results in equilibrium conditions for the SOC levels. The radical reduction in manure application in the sandy arable land system around 1900 causes a continued decrease in SOC stocks under the no-climate-change scenario for this system. In contrast, in the sandy forest system, the land use change from heathland to forest around 1900 contributes to a considerable and stable increase in SOC levels, which is expected to persist for decades to come. This suggests that, in contrast to what Senapati et al. (2013) found for relatively undisturbed land use systems, initialization of SOC pools is essential for systems that have undergone major changes in land use.

For the agricultural systems, the future projections for total SOC stocks under the two climate change scenarios (G+ cc T, P and W+ cc T, P) show losses of nearly 5% for the period 2013–2100. The losses are higher for the more extreme scenario (W+ cc T, P). Compared to the no-climate-change scenario (No cc), the losses amount to nearly 4% for the grassland systems and 2% for the arable land systems. Opposite results are projected for the forest systems, for which the climate change scenarios (G+ cc T, P and W+ cc T, P) result in an increase in total SOC levels of approximately 8% for the

Effects of climate change and land management

M. Stergiadi et al.

Title Page

Abstract

Introduction

Conclusions

References

Tables

Figures



Back

Close

Full Screen / Esc

Printer-friendly Version

Interactive Discussion



period 2013–2100, with slightly higher total SOC gains for the W+ scenario. Compared to the no-climate-change scenario (No cc), the gains amount to approximately 2%.

The analysis of the sole effects of changes in temperature and changes in precipitation reveals contrasting behaviour for the several systems. The analysis of the individual effect of temperature on the future development of SOC dynamics (W+ cc T scenario) shows that, for all systems, elevated temperature has a positive effect on both carbon inputs via primary production and decomposition by soil biota (Tables S2–S4). However, the net effect of more carbon entering the soil and of accelerated SOC decomposition differs between the systems. In the forest systems, the increased SOC levels under the W+ cc T scenario in comparison to the no-climate-change scenario (No cc) indicates that the positive effect of temperature on carbon inputs is greater than that on decomposition. In agricultural systems, however, the SOC levels under the W+ cc T scenario decrease in comparison to the no-climate-change scenario. In these systems, removal of biomass by harvest or grazing subdues the effect of increased carbon inputs, which, under an increase in decomposition rates, causes a net decrease in SOC levels under increasing temperature.

Results from the simulations addressing the effect of changes only in precipitation (W+ cc P scenario) indicate that drier climate conditions in comparison to the no-climate-change scenario has an overall negative effect on both SOC decomposition and carbon inputs. The antagonistic effect of decreased primary production and hindered decomposition causes lower SOC levels in the forest system compared to the no-climate-change scenario (No cc). As for the agricultural systems under the W+ cc T scenario, the effects on primary production are attenuated by harvest and grazing, which cause higher SOC levels in the agricultural systems compared to the no-climate-change scenario. Thus, the effects of changes in precipitation are opposite to the effects on temperature, but the effect of temperature predominated over that of precipitation.

For all systems, the climate change scenarios for the period 2013–2100 result in a decrease in DOC concentrations and leaching rates (Tables 6–8). The decrease in

BGD

12, 19627–19671, 2015

Effects of climate change and land management

M. Stergiadi et al.

Title Page

Abstract

Introduction

Conclusions

References

Tables

Figures



Back

Close

Full Screen / Esc

Printer-friendly Version

Interactive Discussion



Effects of climate change and land management

M. Stergiadi et al.

Title Page

Abstract

Introduction

Conclusions

References

Tables

Figures



Back

Close

Full Screen / Esc

Printer-friendly Version

Interactive Discussion



DOC leaching rates is more pronounced for the loamy soils, in which SOC is absorbed more effectively to soil minerals. Under the no-climate-change scenario (No cc), the model predicted a decline in DOC concentrations for all systems and in DOC leaching rates for all systems except for the sandy forest system. For this system, the DOC leaching rate shows a slight upward trend during the period 2013–2100.

The scenario considering the sole effect of changes in temperature ($W+ cc T$) (Tables 6–8) shows a decrease in leached carbon rates for all cases except for the forest system on sandy soil. For this system, the warmer weather conditions lead to increased leached carbon fluxes and DOC concentrations for the period 2013–2100. For the forest system on loamy soil, the model predictions show a decrease in DOC leaching rates and an increase in DOC concentrations due to a decrease in the water flux through the soil profile at the end of the simulation period. The simulated changes (positive and negative) are comparable to the values resulting from the no-climate-change scenario (No cc), suggesting that temperature only plays a subordinate role in dissolved organic carbon dynamics. Projected changes in precipitation rates ($W+ cc P$ scenario) cause a considerable decrease in DOC concentrations and leaching rates in all systems (Tables 6–8), confirming that drier soil conditions during summer, when DOC is larger than during winter due to larger biological activity and decomposition rates, constrain the leaching of organic material from the soil profile.

The future SOC predictions that we present in this paper are in accordance with previous studies that confirmed negative interactions between temperature and SOC levels and positive interactions between precipitation and SOC levels (Jenny, 1941, 1980; Parton et al., 1987; Burke et al., 1989; Schimel et al., 1994; Kirschbaum, 2000; Smith et al., 2005; Gottschalk et al., 2012). In line with our findings, Smith et al. (2005, 2006) found that, under climate change conditions, SOC contents in European croplands and grasslands are expected to slightly decrease, while in European forest soils, SOC is expected to increase by 2050. SOC gains in forest systems of Western Europe by 2040 have also been projected by Liski et al. (2002), whereas Hall et al. (1995) and Post et al. (2008) projected overall SOC decline in agricultural soils due to cli-

Effects of climate change and land management

M. Stergiadi et al.

Title Page

Abstract

Introduction

Conclusions

References

Tables

Figures



Back

Close

Full Screen / Esc

Printer-friendly Version

Interactive Discussion



mate change. A study on the impact of climate change on SOC in agricultural soils in the Mediterranean climate zone (Álvaro-Fuentes et al., 2012a) showed opposite trends compared to our findings. Their study projected SOC gains in Northeastern Spain by the end of the 21st century due to temperature-induced increase in carbon inputs and precipitation-induced constraints in soil microbial activity. In contrast to our conclusion that the effect of temperature predominates over that of precipitation, Álvaro-Fuentes et al. (2012a) concluded that soil moisture was the main controlling factor of SOC sequestration in Spanish soils.

In concordance with our findings, Harrison et al. (2008) concluded that DOC release in various soil types in the United Kingdom was mainly controlled by precipitation, but was also to a smaller extent affected by temperature through a decrease in soil water leaching (enhanced evaporation). Tranvik et al. (2002) also indicated the importance of changes in precipitation due to climate change on DOC leaching.

3.3.2 Land management change scenario

The projected changes in SOC levels under the land management scenarios (G+ cc RF and W+ cc RF) vary between the agricultural systems. For the grassland systems (Table 9), the simulated reduction in nitrogen and phosphorus applied via mineral fertilizers (by 60 and 100 %, respectively) and in phosphorus applied via manure (by 20 %) has a negligible effect on SOC stocks and DOC leaching. This negligible response of SOC to decreased fertilization rates in the grassland systems can be explained by the vast amounts of organic carbon added to these systems via manure throughout the simulation period (almost $3 \text{ t ha}^{-1} \text{ yr}^{-1}$), which overwhelmed the effect of changes in the application rates of nutrients via mineral fertilizers.

For the arable land systems (Table 10), a reduction in nitrogen and phosphorus applied via mineral fertilizers (by nearly 20 and 80 %, respectively) and in phosphorus applied via manure (by 20 %), results in a decline in SOC by approximately 11 % and in DOC leaching rates and concentrations by approximately 15 %, in comparison to the model results for climate change effects alone (W+ cc T, P and G+ cc T, P scenarios).

Organic carbon addition via manure in arable land systems is much lower than in the grassland systems and is probably not sufficient to outweigh the effects of a reduction in nutrients applied via mineral fertilizers.

Similar findings for SOC have been reported by Lugato et al. (2007), who validated the Century model against observed data of SOC contents in arable land under different fertilization treatments, including the use of manure and artificial fertilizers. Their results suggest that SOC differences among the systems could be mainly attributed to changes in carbon inputs via manure, which is added in amounts much higher than mineral fertilizers. Experimental studies by Ghani et al. (2006), Ruark et al. (2009) and Walmsley et al. (2011) supported that nitrogen fertilization rates had no major influence on DOC leaching from soil in various agroecosystems.

Thus, the effect of changes in land management on the decline in SOC levels and DOC leaching rates in arable land systems is greater than the effect of climate change. This implies that measures to mitigate SOC decline due to climate change and reduced fertilizer gifts and to increase SOC sequestration in these systems should likely be sought in other land management options, such as reduced or no tillage, flexible drainage or changing crop rotation (e.g. West and Post, 2002; Olson et al., 2014).

4 Conclusions

In this modelling study, we adopted the Century model to simulate the development of SOC and DOC for typical Northwestern European conditions under various scenarios of climate change and land management practices. To our knowledge, this is the first time that the Century model has been applied to assess the effects of climate change and land management on DOC concentrations and leaching rates. The highest current SOC levels were simulated for the forest system on sandy soil (2.86%). SOC levels of the grassland systems (1.16 and 1.52% on sandy soil and loamy soil, respectively) were higher than those of the arable land systems (1.02 and 1.32% on sandy soil and loamy soil, respectively), whereas the lowest SOC levels were predicted for the forest

Effects of climate change and land management

M. Stergiadi et al.

Title Page

Abstract

Introduction

Conclusions

References

Tables

Figures



Back

Close

Full Screen / Esc

Printer-friendly Version

Interactive Discussion



system on loamy soil (0.63%). In general, these simulated SOC levels were within or close to the measured ranges.

For the period 2013–2100, we project a decrease in SOC by 2 to 10% in agricultural systems and a slight increase in SOC by 5 to 10% in forest systems, under the two climate change scenarios considered (G+ cc *T*, *P* and W+ cc *T*, *P*). For all systems, the DOC concentrations and leaching rates will decrease by up to 50%. We found that an increase in temperature causes an increase in both carbon inputs via primary production and in carbon losses via enhanced decomposition. Changes in only precipitation have an opposite effect on carbon inputs and decomposition compared to the effect of temperature. In the agricultural systems, the effects of temperature and precipitation on carbon inputs are attenuated by harvest and grazing. For SOC, the temperature effect predominates over the precipitation effect for all systems, whereas for the DOC leaching rates, the precipitation effect is more dominant. Our results show that a reduction in fertilizer application rates under the land management change scenario will lead to negligible changes in SOC and DOC leaching rates for the grassland systems compared to the climate change scenarios and to an additional decrease in SOC levels and DOC leaching rates for the arable land systems. These effects of changes in land management on the decline in SOC levels and DOC leaching rates in arable land systems are greater than the effect of climate change.

The Century model proved to be a useful tool for modelling past, present, and future SOC contents and DOC concentrations, thus providing essential information for assessing the effects of climate change and land management on carbon sequestration in soils and the associated implications for soil contaminant transport.

**The Supplement related to this article is available online at
doi:10.5194/bgd-12-19627-2015-supplement.**

Effects of climate change and land management

M. Stergiadi et al.

Title Page

Abstract

Introduction

Conclusions

References

Tables

Figures



Back

Close

Full Screen / Esc

Printer-friendly Version

Interactive Discussion



Author contributions. M. Stergiadi, M. van der Perk, A. C. M. de Nijs and M. F. P. Bierkens designed the modelling procedure. M. Stergiadi performed the model simulations. M. Stergiadi prepared the manuscript with contributions from all co-authors.

Acknowledgements. This research was conducted in the framework of the “Climate Cascades” Project, funded by the Dutch National Institute for Public Health and the Environment (RIVM), in collaboration with Utrecht University (the Netherlands), Alterra-Wageningen University (the Netherlands) and VITO (Belgium). The authors would like to thank Oene Oenema for his valuable advice on the Century model parameterization with respect to land management, Luc Bonten (Alterra-Wageningen University) for providing soil data, and Cindy Keough (Colorado State University, USA), Peter de Willigen, Hanneke Heesmans (Alterra-Wageningen University) and Christian Mulder (RIVM) for advice on modelling.

References

- Adams, A. B., Harrison, R. B., Sletten, R. S., Strahm, B. D., Turnblom, E. C., and Jensen, C. M.: Nitrogen-fertilization impacts on carbon sequestration and flux in managed coastal Douglas-fir stands of the Pacific Northwest, *Forest Ecol. Manag.*, 220, 313–325, doi:10.1016/j.foreco.2005.08.018, 2005.
- Alterra: Recommendations for establishing action programmes under directive 91/676/EEC concerning the protection of waters against pollution caused by nitrates from agricultural sources, Final Report, Contract number N° 07, 0307/2010/580551/ETU/B1, Alterra-Wageningen University and Research Centre, Wageningen, the Netherlands, 2011.
- Alvarez, R.: A review of nitrogen fertilizer and conservation tillage effects on soil organic carbon storage, *Soil Use Manage.*, 21, 38–52, doi:10.1111/j.1475-2743.2005.tb00105.x, 2005.
- Álvarez-Fuentes, J., Easter, M., and Paustian, K.: Climate change effects on organic carbon storage in agricultural soils of northeastern Spain, *Agr. Ecosyst. Environ.*, 155, 87–94, doi:10.1016/j.agee.2012.04.001, 2012a.
- Álvarez-Fuentes, J., Morell, F. J., Plaza-Bonilla, D., Arrue, J. L., and Cantero-Martinez, C.: Modelling tillage and nitrogen fertilization effects on soil organic carbon dynamics, *Soil Till. Res.*, 120, 32–39, doi:10.1016/j.still.2012.01.009, 2012b.

Effects of climate change and land management

M. Stergiadi et al.

Title Page

Abstract

Introduction

Conclusions

References

Tables

Figures



Back

Close

Full Screen / Esc

Printer-friendly Version

Interactive Discussion



Effects of climate change and land management

M. Stergiadi et al.

Title Page

Abstract

Introduction

Conclusions

References

Tables

Figures



Back

Close

Full Screen / Esc

Printer-friendly Version

Interactive Discussion



Baldock, J. A.: Composition and cycling of organic carbon in soil, in: Nutrient Cycling in Terrestrial Ecosystems, Soil Biology Series, vol. 10, edited by: Marschner, P., and Rengel, Z., Springer-Verlag, Berlin, 1–35, 2007.

Bodemdata: Soil Database, available at: <http://maps.bodemdata.nl/bodemdatanl/index.jsp>, last access: 5 January 2014, 2014 (in Dutch).

Bouman, M. T. I. J., Bos, J. A. A., and Van Beek, R.: Van wildernis naar cultuurlandschap. Een reconstructie van de regionale vegetatieontwikkeling van Twente in het Holoceen, ADC ArchaeoProjecten rapport 3413, ADC ArchaeoProjecten, Amersfoort, 2013 (in Dutch).

Brandsma, T. and Buishand, T. A.: KNMI contribution to the European project POPSICLE, Technical report TR-194, KNMI, De Bilt, the Netherlands, 1996.

Burke, I. C., Yonker, C. M., Parton, W. J., Cole, C. V., Flach, K., and Schimel, D. S.: Texture, climate and cultivation effects on soil organic matter in US grassland soils, *Soil Sci. Soc. Am. J.*, 53, 800–805, doi:10.2136/sssaj1989.03615995005300030029x, 1989.

Burke, I. C., Elliott, E. T., and Cole, C. V.: Influence of microclimate, landscape position, and management on soil organic matter in agroecosystems, *Ecol. Appl.*, 5, 124–131, doi:10.2307/1942057, 1995.

Capriel, P.: Trends in organic carbon and nitrogen contents in agricultural soils in Bavaria (south Germany) between 1986 and 2007, *Eur. J. Soil Sci.*, 64, 445–454, doi:10.1111/ejss.12054, 2013.

CBS: Compendium voor de Leefomgeving, available at: <http://www.compendiumvoordeleefomgeving.nl>, last access: 7 January 2014, 2014a (in Dutch).

CBS: Statline Database, available at: <http://statline.cbs.nl>, last access: 7 January 2014, 2014b (in Dutch).

Christensen, O. B., Goodess, C. M., Harris, I., and Watkiss, P.: European and global climate change projections: discussion of climate change model outputs, scenarios and uncertainty in the EC RTD ClimateCost Project, in: The ClimateCost Project, Final report, vol. 1, edited by: Watkiss, P., Stockholm Environment Institute, Stockholm, Sweden, 2011.

Commission of the European Communities: Council Directive Concerning the Protection of Waters against Pollution caused by Nitrates from agricultural sources, 91/676/EEC, European Economic Community, Brussels, Belgium, 1991.

Conant, R. T., Drijber, R. A., Haddix, M. L., Parton, W. J., Paul, E. A., Plante, A. F., Six, J., and Steinweg, J. M.: Sensitivity of organic matter decomposition to warming varies with its quality, *Glob. Change Biol.*, 14, 868–877, doi:10.1111/j.1365-2486.2008.01541.x, 2008.

Effects of climate change and land management

M. Stergiadi et al.

[Title Page](#)

[Abstract](#)

[Introduction](#)

[Conclusions](#)

[References](#)

[Tables](#)

[Figures](#)



[Back](#)

[Close](#)

[Full Screen / Esc](#)

[Printer-friendly Version](#)

[Interactive Discussion](#)



- Cramer, W., Bondeau, A., Woodward, F. I., Prentice, I. C., Betts, R. A., Brovkin, V., Cox, P. M., Fisher, V., Foley, J. A., Friend, A. D., Kucharik, C., Lomas, M. R., Ramankutty, N., Sitch, S., Smith, B., White, A., and Young-Molling, C.: Global response of terrestrial ecosystem structure and function to CO₂ and climate change: results from six dynamic global vegetation models, *Glob. Change Biol.*, 7, 357–373, doi:10.1046/j.1365-2486.2001.00383.x, 2001.
- Davidson, E. A. and Janssens, I. A.: Temperature sensitivity of soil carbon decomposition and feedbacks to climate change, *Nature*, 440, 165–173, doi:10.1038/nature04514, 2006.
- De Bakker, H.: Major Soils and Soil Regions in the Netherlands, Junk, The Hague, the Netherlands, Centre for Agricultural Publ. And Documentation, Wageningen, the Netherlands, 1979.
- Dijkstra, J. J., Meeussen, J. C. L., and Comans, R. N. J.: Leaching of heavy metals from contaminated soils: an experimental and modeling study, *Environ. Sci. Technol.*, 38, 4390–4395, doi:10.1021/es049885v, 2004.
- Driscoll, C. T., Fuller, R. D., and Simone, D. M.: Longitudinal variations in trace metal concentrations in a northern forested ecosystem, *J. Environ. Qual.*, 17, 101–107, doi:10.2134/jeq1988.00472425001700010015x, 1988.
- Elliott, H. A., Liberati, M. R., and Huang, C. P.: Competitive adsorption of heavy metals by soils, *J. Environ. Qual.*, 15, 214–219, doi:10.2134/jeq1986.00472425001500030002x, 1986.
- Ghani, A., Dexter, M., Kear, M., Lindsey, S., and Ledgard, S. L.: Influence of plant litter and animal excreta on leaching of dissolved organic nitrogen and carbon in pastoral soil, in: *Proceedings of the 18th World Congress of Soil Sci.*, Philadelphia, USA, 9–15 July 2006, Dunmore Printing Company, Palmerston, 1762 pp., 2006.
- Glendining, M. J. and Powlson, D. S.: The effect of long-term applications of inorganic nitrogen fertilizer on soil organic nitrogen, in: *Advances in Soil Organic Matter Research: the Impact on Agriculture and the Environment*, edited by: Wilson, W. S., The Royal Society of Chemistry, Cambridge, UK, 329–338, 1991.
- Gottschalk, P., Smith, J. U., Wattenbach, M., Bellarby, J., Stehfest, E., Arnell, N., Osborn, T. J., Jones, C., and Smith, P.: How will organic carbon stocks in mineral soils evolve under future climate? Global projections using RothC for a range of climate change scenarios, *Biogeochemistry*, 9, 3151–3171, doi:10.5194/bg-9-3151-2012, 2012.
- Groenenberg, J. E., Dijkstra, J. J., Bonten, L. T. C., De Vries, W., and Comans, R. N. J.: Evaluation of the performance and limitations of empirical partition-relations and process based

Effects of climate change and land management

M. Stergiadi et al.

Title Page

Abstract

Introduction

Conclusions

References

Tables

Figures



Back

Close

Full Screen / Esc

Printer-friendly Version

Interactive Discussion



multisurface models to predict trace element solubility in soils, *Environ. Pollut.*, 166, 98–107, doi:10.1016/j.envpol.2012.03.011, 2012.

Guisquiani, P. L., Concezzi, L., Businelli, M., and Macchioni, A.: Fate of pig sludge liquid fraction in calcareous soil: agricultural and environmental implications, *J. Environ. Qual.*, 27, 364–371, doi:10.2134/jeq1998.00472425002700020017x, 1998.

Hall, D. O., Ojima, D. S., Parton, W. J., and Scurlock, J. M. O.: Response of temperate and tropical grasslands to CO₂ and climate change, *J. Biogeogr.*, 22, 537–547, doi:10.2307/2845952, 1995.

Hanegraaf, M. C., Hoffland, E., Kuikman, P. J., and Brussaard, L.: Trends in soil organic matter contents in Dutch grasslands and maize fields on sandy soils, *Eur. J. Soil Sci.*, 60, 213–222, doi:10.1111/j.1365-2389.2008.01115.x, 2009.

Harrison, A. F., Taylor, K., Scott, A., Poskitt, J., Benham, D., Grace, J., Chaplow, J., and Rowland, P.: Potential effects of climate change on DOC release from three different soil types on the Northern Pennines UK: examination using field manipulation experiments, *Glob. Change Biol.*, 14, 687–702, doi:10.1111/j.1365-2486.2007.01504.x, 2008.

Heikkinen, J., Ketoja, E., Nuutinen, V., and Regina, K.: Declining trend of carbon in Finnish cropland soils in 1974–2009, *Glob. Change Biol.*, 19, 1456–1469, doi:10.1111/gcb.12137, 2013.

Impellitteri, C. A., Lu, Y. F., Saxe, J. K., Allen, H. E., and Peijnenburg, W.: Correlation of the partitioning of dissolved organic matter fractions with the desorption of Cd, Cu, Ni, Pb and Zn from 18 Dutch soils, *Environ. Int.*, 28, 401–410, doi:10.1016/S0160-4120(02)00065-X, 2002.

IPCC: Climate Change 2007: The Physical Science Basis, in: Contribution of Working Group I to the Fourth Assessment Report of the Intergovernmental Panel on Climate Change, edited by: Solomon, S., Qin, D., Manning, M., Chen, Z., Marquis, M., Averyt, K. B., Tignor, M., and Miller, H. L., Cambridge University Press, Cambridge, UK and New York, USA, 996 pp., 2007.

Jenny, H.: *Factors of Soil Formation: a System of Quantitative Pedology*, McGraw-Hill Book Co, New York, USA, 1941.

Jenny, H.: *The Soil Resource: Origin and Behavior*, Springer, New York, USA, 377 pp., 1980.

Kaplan, J. O., Krumhardt, K. M., and Zimmermann, N.: The prehistoric and preindustrial deforestation of Europe, *Quaternary Sci. Rev.*, 28, 3016–3034, doi:10.1016/j.quascirev.2009.09.028, 2009.

Effects of climate change and land management

M. Stergiadi et al.

[Title Page](#)[Abstract](#)[Introduction](#)[Conclusions](#)[References](#)[Tables](#)[Figures](#)[Back](#)[Close](#)[Full Screen / Esc](#)[Printer-friendly Version](#)[Interactive Discussion](#)

Khan, S. A., Mulvaney, R. L., Ellsworth, T. R., and Boast, C. W.: The myth of nitrogen fertilization for soil carbon sequestration, *J. Environ. Qual.*, 36, 1821–1832, doi:10.2134/jeq2007.0099, 2007.

Kindler, R., Siemens, J., Kaiser, K., Walmsley, D. C., Bernhofer, C., Buchmann, N., Cellier, P., Eugster, W., Gleixner, G., Grünwald, T., Heim, A., Ibrom, A., Jones, S. K., Jones, M., Klumpp, K., Kutsch, W., Steenberg Larsen, K., Lehuger, S., Loubet, B., Mckenzie, R., Moors, E., Osborne, B., Pilegaard, K., Rebmann, C., Saunders, M., Schmidt, M. W. I., Schruppf, M., Seyfferth, J., Skiba, U., Soussana, J.-F., Sutton, M. A., Tefs, C., Vowinckel, B., Zeeman, M. J., and Kaupenjohann, M.: Dissolved carbon leaching from soil is a crucial component of the net ecosystem carbon balance, *Glob. Change Biol.*, 17, 1167–1185, doi:10.1111/j.1365-2486.2010.02282.x, 2011.

Kirschbaum, M. U. F.: Will changes in soil organic carbon act as a positive or negative feedback on global warming, *Biogeochemistry*, 48, 21–51, doi:10.1023/A:1006238902976, 2000.

Knibbe, M. T.: Feed, fertilizer and agricultural productivity in the Netherlands, 1880–1930, *Agr. Hist.*, 74, 39–57, 2000.

KNMI: Klimaat in de 21e eeuw, vier scenario's voor Nederlands, Royal Dutch Meteorological Institute, De Bilt, the Netherlands, 2006 (in Dutch).

KNMI: Klimaatverandering in Nederland, aanvulling op de KNMI'06 scenario's, Royal Dutch Meteorological Institute, De Bilt, the Netherlands, 2009 (in Dutch).

Lal, R.: Agricultural activities and the global carbon cycle, *Nutr. Cycl. Agroecosys.*, 70, 103–116, doi:10.1023/B:FRES.0000048480.24274.0f, 2004.

Liski, J., Perruchoud, D., and Karjalainen, T.: Increasing carbon stocks in the forest soils of western Europe, *Forest Ecol. Manag.*, 169, 159–175, doi:10.1016/S0378-1127(02)00306-7, 2002.

LTO: Koersvast richting 2020: voortvarend in verantwoordelijkheid, Plan Bedrijfsleven Agroketen Veehouderij en Milieu, Land- en Tuinbouw Organisatie, The Hague, the Netherlands, 2013 (in Dutch).

Lugato, E., Paustian, K., and Giardini, L.: Modelling soil organic carbon dynamics in two long-term experiments of north-eastern Italy, *Agr. Ecosyst. Environ.*, 120, 423–432, doi:10.1016/j.agee.2006.11.006, 2007.

Meersmans, J., Van Wesemael, B., De Ridder, F., Dotti, M. F., De Baets, S., and Van Molle, M.: Changes in organic carbon distribution with depth in agricultural soils in northern Belgium,

Effects of climate change and land management

M. Stergiadi et al.

Title Page

Abstract

Introduction

Conclusions

References

Tables

Figures



Back

Close

Full Screen / Esc

Printer-friendly Version

Interactive Discussion



1960–2006, *Glob. Change Biol.*, 15, 2739–2750, doi:10.1111/j.1365-2486.2009.01855.x, 2009.

Metherell, A. K., Harding, L. A., Cole, C. V., and Parton, W. J.: Century soil organic matter model environment technical documentation, Agroecosystem Version 4.0, Great Plains System Research Unit Technical Report No.4. USDA–ARS, Fort Collins, Colorado, USA, 245 pp., 1993.

Metherell, A. K., Cambardella, C. A., Parton, W. J., Peterson, G. A., Harding, L. A., and Cole, C. V.: Simulation of soil organic matter dynamics in dryland wheat-fallow cropping systems, in: *Soil Management and Greenhouse Effect*, edited by: Lal, R., Kimball, J., Levine, E., and Stewart, B. A., CRC Press, Boca Raton, Florida, USA, 259–270, 1995.

Michalzik, B., Kalbitz, K., Park, J.-H., Solinger, S., and Matzner, E.: Fluxes and concentrations of dissolved organic carbon and nitrogen – a synthesis for temperate forests, *Biogeochemistry*, 52, 173–205, doi:10.1023/A:1006441620810, 2001.

Ministry of Economic Affairs, Agriculture and Innovation: Mestbeleid 2010–2013: Tabellen, Table 1 Stikstofgebruiksnormen. Ministry of Economic Affairs, Agriculture and Innovation, The Hague, the Netherlands, 2011 (in Dutch).

Neff, J. C. and Asner, G. P.: Dissolved organic carbon in terrestrial ecosystems: synthesis and a model, *Ecosystems*, 4, 29–48, doi:10.1007/s100210000058, 2001.

Olson, K. R., Al-Kaisi, M., Lal, R., and Lowery, B.: Examining the paired comparison method approach for determining soil organic carbon sequestration rates, *J. Soil Water Conserv.*, 69, 193A–197A, doi:10.2489/jswc.69.6.193A, 2014.

Parton, W. J., Schimel, D. S., Cole, C. V., and Ojima, D. S.: Analysis of factors controlling soil organic matter levels in Great Plains grasslands, *Soil Sci. Soc. Am. J.*, 51, 1173–1179, doi:10.2136/sssaj1987.03615995005100050015x, 1987.

Parton, W. J., Stewart, J. W. B., and Cole, C. V.: Dynamics of C, N, P and S in grassland soils: a model, *Biogeochemistry*, 5, 109–131, doi:10.1007/BF02180320, 1988.

Parton, W. J., Scurlock, J. M. O., Ojima, D. S., Gilmanov, T. G., Scholes, R. J., Schimel, D. S., Kirchner, T., Menaut, J.-C., Seastedt, T., Garcia Moya, E., Kamnalrut, A., and Kinyamario, J. I.: Observations and modeling of biomass and soil organic matter dynamics for the grassland biome worldwide, *Global Biogeochem. Cy.*, 7, 785–809, doi:10.1029/93gb02042, 1993.

Paul, E. A.: Dynamics of organic matter in soils, *Plant Soil*, 76, 275–285, 1984.

Effects of climate change and land management

M. Stergiadi et al.

Title Page

Abstract

Introduction

Conclusions

References

Tables

Figures



Back

Close

Full Screen / Esc

Printer-friendly Version

Interactive Discussion



Paustian, K., Parton, W. J., and Persson, J.: Modeling soil organic matter in organic amended and nitrogen-fertilized long-term plots, *Soil Sci. Soc. Am. J.*, 56, 476–488, doi:10.2136/sssaj1992.03615995005600020023x, 1992.

Paustian, K., Elliott, E. T., Peterson, G. A., and Killian, K.: Modelling climate, CO₂ and management impacts on soil carbon in semi-arid agroecosystems, *Plant Soil*, 187, 351–365, doi:10.1007/BF00017100, 1996.

Paustian, K., Andren, O., Janzen, H., Lal, R., Smith, P., Tian, G., Tiessen, H., Van Noordwijk, M., and Woome, P.: Agricultural soil as a C sink to offset CO₂ emissions, *Soil Use Manage.*, 13, 230–244, 1997a.

Paustian, K., Collins, H. P., and Paul, E. A.: Management controls on soil carbon, in: *Soil Organic Matter in Temperate Agroecosystems: Long-Term Experiments in North America*, edited by: Paul, E. A., Paustian, K. H., Elliott, E. T., and Cole, C. V., Lewis Publishers, CRC Press, Boca Raton, Florida, USA, 15–49, 1997b.

Post, J., Conradt, T., Suckow, F., Krysanova, V., Wechsung, F., and Hattermann, F. F.: Integrated assessment of cropland soil carbon sensitivity to recent and future climate in the Elbe River basin, *Hydrolog. Sci. J.*, 53, 1043–1058, doi:10.1623/hysj.53.5.1043, 2008.

Post, W. M., Izaurralde, R. C., Mann, L. K., and Bliss, N.: Monitoring and verifying soil organic carbon sequestration, in: *Proceedings of the St. Michaels Workshop on Carbon Sequestration in Soils: Science, Monitoring and Beyond*, edited by: Rosenberg, N., Izaurralde, R., and Malone, E., 3–5 December 1998, St Michael's, Maryland, Battelle Press, Columbus, USA, 41–66, 1999.

Province of Noord-Brabant: Provincial Soil Quality Monitoring Network, 1995–1996, Noord-Brabant, the Netherlands, 1996.

Reeves, D. W.: The role of organic matter in maintaining soil quality in continuous cropping systems, *Soil Till. Res.*, 43, 131–167, doi:10.1016/S0167-1987(97)00038-X, 1997.

Reid, K.: Comment on the myth of nitrogen fertilization for soil carbon sequestration, *J. Environ. Qual.*, 37, 739–740, doi:10.2134/jeq2008.00011e, 2008.

Reijneveld, A., Van Wensem, J., and Oenema, O.: Soil organic carbon contents of agricultural land in the Netherlands between 1984 and 2004, *Geoderma*, 152, 231–238, doi:10.1016/j.geoderma.2009.06.007, 2009.

Riley, H. and Bakkegard, M.: Declines of soil organic matter content under arable cropping in southeast Norway, *Acta Agr. Scand. B-S. P.*, 56, 217–223, doi:10.1080/09064710510029141, 2006.

Effects of climate change and land management

M. Stergiadi et al.

Title Page

Abstract

Introduction

Conclusions

References

Tables

Figures



Back

Close

Full Screen / Esc

Printer-friendly Version

Interactive Discussion



- RIVM: Database of the Biological Indicator of Soil Quality (BISQ), National Institute for Public Health and the Environment, Bilthoven, the Netherlands, 2014.
- Römkens, P., Hoenderboom, G., and Dolfig, J.: Copper solution geochemistry in arable soils: field observations and model application, *J. Environ. Qual.*, 28, 776–783, doi:10.2134/jeq1999.00472425002800030007x, 1999.
- Römkens, P. F. A. M., Groenenberg, J. E., Bonten, L. T. C., De Vries, W., and Bril, J.: Derivation of partition relationships to calculate Cd, Cu, Ni, Pb and Zn solubility and activity in soil solutions, Alterra Report no. 305, Alterra, Wageningen, the Netherlands, 2004.
- Ruark, M. D., Brouder, S. M., and Turco, R. F.: Dissolved organic carbon losses from tile drained agroecosystems, *J. Environ. Qual.*, 38, 1205–1215, doi:10.2134/jeq2008.0121, 2009.
- Sauvé, S., Hendershot, W., and Allen, H. E.: Solid-solution partitioning of metals in contaminated soils: dependence on pH, total metal burden, and organic matter, *Environ. Sci. Technol.*, 34, 1125–1131, doi:10.1021/es9907764, 2000.
- Schijven, J. F. and De Roda Husman, A. M.: Effect of climate changes on waterborne disease in the Netherlands, *Water Sci. Technol.*, 51, 79–87, 2005.
- Schimel, D. S.: Terrestrial ecosystems and the carbon cycle, *Glob. Change Biol.*, 1, 77–91, doi:10.1111/j.1365-2486.1995.tb00008.x, 1995.
- Schimel, D. S., Braswell, B. H., Holland, E. A., McKeown, R., Ojima, D. S., Painter, T. H., Parton, W. J., and Townsend, A. R.: Climatic, edaphic, and biotic controls over storage and turnover of carbon in soils, *Global Biogeochem. Cy.*, 8, 279–293, doi:10.1029/94GB00993, 1994.
- Schlesinger, W.: Carbon sequestration in soils: some cautions amidst optimism, *Agr. Ecosyst. Environ.*, 82, 121–127, doi:10.1016/S0167-8809(00)00221-8, 2000.
- Schlesinger, W. H. and Andrews, J. A.: Soil respiration and the global carbon cycle, *Biogeochemistry*, 48, 7–20, doi:10.1023/A:1006247623877, 2000.
- Schulp, C. J. E. and Verburg, P. H.: Effect of land use history and site factors on spatial variation of soil organic carbon across a physiographic region, *Agr. Ecosyst. Environ.*, 133, 86–97, doi:10.1016/j.agee.2009.05.005, 2009.
- Senapati, N., Smith, P., Wilson, B., Yeluripati, J. B., Daniel, H., Lockwood, P., and Ghosh, S.: Projections of changes in grassland soil organic carbon under climate change are relatively insensitive to methods of model initialization, *Eur. J. Soil Sci.*, 64, 229–238, doi:10.1111/ejss.12014, 2013.

Effects of climate change and land management

M. Stergiadi et al.

[Title Page](#)

[Abstract](#)

[Introduction](#)

[Conclusions](#)

[References](#)

[Tables](#)

[Figures](#)



[Back](#)

[Close](#)

[Full Screen / Esc](#)

[Printer-friendly Version](#)

[Interactive Discussion](#)



- Sleutel, S., De Neve, S., Hofman, G., Boeckx, P., Beheydt, D., Van Cleemput, O., Mestdagh, I., Lootens, P., Carlier, L., Van Camp, N., Verbeeck, H., Van De Walle, I., Samson, R., Lust, N., and Lemeur, R.: Carbon stock changes and carbon sequestration potential of Flemish cropland soils, *Glob. Change Biol.*, 9, 1193–1203, doi:10.1046/j.1365-2486.2003.00651.x, 2003.
- 5 Smith, J., Smith, P., Wattenbach, M., Zaehle, S., Hiederer, R., Jones, R. J. A., Montanarella, L., Rounsevell, M. D. A., Reginster, I., and Ewert, F.: Projected changes in mineral soil carbon of European croplands and grasslands, 1990–2080, *Glob. Change Biol.*, 11, 2141–2152, doi:10.1111/j.1365-2486.2005.001075.x, 2005.
- 10 Smith, P., Smith, J., Wattenbach, M., Meyer, J., Lindner, M., Zaehle, S., Hiederer, R., Jones, R. J. A., Montanarella, L., Rounsevell, M., Reginster, I., and Kankaanpää, S.: Projected changes in mineral soil carbon of European forests, 1990–2100, *Can. J. Soil Sci.*, 86, 159–169, doi:10.4141/S05-078, 2006.
- Sonneveld, M. P. W., Bouma, J., and Veldkamp, A.: Refining soil survey information for a Dutch soil series using land use history, *Soil Use Manage.*, 18, 157–163, doi:10.1111/j.1475-2743.2002.tb00235.x, 2002.
- 15 Spek, T.: Het Drentse esdorpenlandschap. Een historisch-geografische studie, PhD Thesis, Wageningen University, Wageningen, the Netherlands, 2004 (in Dutch).
- Tranvik, L. J., Jansson, M., Evans, C. D., Freeman, C., Monteith, D. T., Reynolds, B., and Fenner, N.: Terrestrial export of organic carbon, *Nature*, 415, 861–862, doi:10.1038/415861b, 2002.
- 20 Trumbore, S. E., Chadwick, O. A., and Amundson, R.: Rapid exchange between soil carbon and atmospheric carbon dioxide driven by temperature change, *Science*, 272, 393–396, doi:10.1126/science.272.5260.393, 1996.
- Unamuno, V. I. R., Meers, E., Du Laing, G., and Tack, F. M. G.: Effect of physicochemical soil characteristics on copper and lead solubility in polluted and unpolluted soils, *Soil Sci.*, 174, 601–610, doi:10.1097/SS.0b013e3181bf2f52, 2009.
- 25 Van Den Hurk, B., Klein Tank, A., Lenderink, G., Van Ulden, A., Van Oldenborgh, G. J., Katsman, C., Van Den Brink, H., Keller, F., Bessembinder, J., Burgers, G., Komen, G., Hazeleger, W., and Drijfhout, S.: KNMI climate change scenarios 2006 for the Netherlands, KNMI Scientific Report WR 2006–01, KNMI, De Bilt, the Netherlands, 2006.
- 30 Van Engelen, A. F. V., Buisman, J., and Ijnsen, F.: A millennium of weather, winds and water in the Low Countries, in: *History and Climate*, edited by: Jones, P. D., Ogilvie, A. E. J., Davies, T. D., and Briffa, K. R., Springer US, New York, USA, 101–124, 2001.

Effects of climate change and land management

M. Stergiadi et al.

Title Page

Abstract

Introduction

Conclusions

References

Tables

Figures



Back

Close

Full Screen / Esc

Printer-friendly Version

Interactive Discussion



Van Vuuren, D. P., Edmonds, J., Kainuma, M., Riahi, K., Thomson, A., Hibbard, K., Hurtt, G. C., Kram, T., Krey, V., and Lamarque, J.-F.: The representative concentration pathways: an overview, *Climatic Change*, 109, 5–31, doi:10.1007/s10584-011-0148-z, 2011.

Verheyen, K., Bossuyt, B., Hermy, M., and Tack, G.: The land use history (1278– 1990) of a mixed hardwood forest in western Belgium and its relationship with chemical soil characteristics, *J. Biogeogr.*, 26, 1115–1128, doi:10.1046/j.1365-2699.1999.00340.x, 1999.

Vleeshouwers, L. M. and Verhagen, A.: Carbon emission and sequestration by agricultural land use: a model study for Europe, *Glob. Change Biol.*, 8, 519–530, doi:10.1046/j.1365-2486.2002.00485.x, 2002.

Walmsley, D. C., Siemens, J., Kindler, R., Kirwan, L., Kaiser, K., Saunders, M., Kaupenjohann, M., and Osborne, B. A.: Dissolved carbon leaching from an Irish cropland soil is increased by reduced tillage and cover cropping, *Agr. Ecosyst. Environ.*, 142, 393–402, doi:10.1016/j.agee.2011.06.011, 2011.

West, T. O. and Post, W. M.: Soil organic carbon sequestration rates by tillage and crop rotation: a global data analysis, *Soil Sci. Soc. Am. J.*, 66, 1930–1946, doi:10.2136/sssaj2002.1930.2002.

Worrall, F., Burt, T., and Shedden, R.: Long term records of riverine dissolved organic matter, *Biogeochemistry*, 64, 165–178, doi:10.1023/A:1024924216148, 2003.

Effects of climate change and land management

M. Stergiadi et al.

[Title Page](#)

[Abstract](#)

[Introduction](#)

[Conclusions](#)

[References](#)

[Tables](#)

[Figures](#)

[◀](#)

[▶](#)

[◀](#)

[▶](#)

[Back](#)

[Close](#)

[Full Screen / Esc](#)

[Printer-friendly Version](#)

[Interactive Discussion](#)



Table 1. Model input soil properties for the different generalized land use types and soil types.

	Sandy soil	Loamy soil	Reference
Soil texture			
Sand, %	75.0	18.0	De Bakker (1979)
Clay, %	4.0	9.0	
Silt, %	21.0	73.0	
Bulk density ^a , g cm ⁻³	1.57	1.36	Century model soil calculator
pH			
Grassland	5.1	6.2	Province of Noord-Brabant (1996), Bodemdata (2014), RIVM (2014)
Arable land	5.1	6.1	
Forest	3.2	4.5	
Heathland ^b	3.2	–	
Soil drainage class ^c			
Grassland and arable land	0.75	0.75	Century model parameterization workbook
Forest	1.00	1.00	
Heathland ^b	1.00	–	

^a Bulk density, as well as field capacity and wilting point (not shown in this table) were calculated by the online Century model calculator, based on soil texture.

^b The heathland system is found only on sandy soil during the spin-up period (800–1905).

^c Soil drainage class (as described in the Century model parameterization workbook): 0.75 somewhat poorly drained soil, 1.00 excessively to moderately well drained soil.

Effects of climate change and land management

M. Stergiadi et al.

Table 2. Average annual precipitation, mean monthly minimum (T_{\min}) and mean monthly maximum (T_{\max}) temperatures for the different climate change scenarios, for the period 2013–2100.

Climate change scenario	Precipitation (mm yr^{-1})	T_{\min} ($^{\circ}\text{C}$)	T_{\max} ($^{\circ}\text{C}$)
No cc ^a	850	6.5	14.8
W+ cc T , P ^b	825	8.4	17.4
W+ cc T ^c	850	8.4	17.4
W+ cc P ^d	825	6.5	14.8
G+ cc T , P ^e	839	7.0	15.6

^a No-climate-change scenario.

^b W+ climate change scenario, considering changes in both temperature (T) and precipitation (P).

^c W+ climate change scenario, considering changes only in temperature (T).

^d W+ climate change scenario, considering changes only in precipitation (P).

^e G+ climate change scenario, considering changes in both temperature (T) and precipitation (P).

Title Page

Abstract

Introduction

Conclusions

References

Tables

Figures



Back

Close

Full Screen / Esc

Printer-friendly Version

Interactive Discussion



Effects of climate change and land management

M. Stergiadi et al.

[Title Page](#)[Abstract](#)[Introduction](#)[Conclusions](#)[References](#)[Tables](#)[Figures](#)[Back](#)[Close](#)[Full Screen / Esc](#)[Printer-friendly Version](#)[Interactive Discussion](#)**Table 3.** Simulated fractionation of SOC (% of total SOC) in the different pools for the three generalized land use types, for the year 2012.

	Grassland		Arable land		Forest	
	sandy	loamy	sandy	loamy	sandy	loamy
active pool	2	3	3	5	4	4
slow pool	79	69	47	64	90	84
passive pool	18	27	41	24	2	9
rest	1	1	9	7	4	3

Effects of climate change and land management

M. Stergiadi et al.

Title Page

Abstract

Introduction

Conclusions

References

Tables

Figures



Back

Close

Full Screen / Esc

Printer-friendly Version

Interactive Discussion



Table 4. Simulated total SOC change (in $\text{g } 100\text{g}^{-1}$) for the three generalized land use types for an increase in soil pH by 0.2 pH units, for the year 2012.

Land use type	SOC change, $\text{g } 100\text{g}^{-1}$
Grassland	
sandy	−0.11
loamy	−0.02
Arable land	
sandy	−0.08
loamy	−0.02
Forest	
sandy	−0.31
loamy	−0.17

Effects of climate change and land management

M. Stergiadi et al.

Title Page

Abstract

Introduction

Conclusions

References

Tables

Figures



Back

Close

Full Screen / Esc

Printer-friendly Version

Interactive Discussion



Table 5. Simulated and observed total SOC levels (%) for the three generalized land use types and soil types.

Land use type	Soil type	Simulated SOC ^a , g m ⁻²	Simulated SOC ^b , %	Observed SOC (median), %	Observed SOC (range ^c), %
Grassland	sandy	3684	1.17	2.30 ^d	1.58–3.43 ^d
	loamy	4160	1.53	2.90 ^e	1.90–3.10 ^e
Arable land	sandy	3253	1.04	2.35 ^d	1.65–3.12 ^d
	loamy	3595	1.32	1.20 ^e	0.95–1.40 ^e
Forest	sandy	8826	2.81	2.65 ^d	1.96–3.54 ^d
	loamy	1727	0.63	1.38 ^f	1.03–2.17 ^f

^a Total SOC (g m⁻²) simulated by the Century model for the top 20 cm of soil.

^b Total SOC (%) resulting from the conversion of the simulated Century model outputs (in g m⁻²) to g 100 g⁻¹, considering a soil bulk density of 1570 kg m⁻³ for the sandy soils, 1360 kg m⁻³ for the loamy soils (as calculated by the online Century model calculator based on soil texture) and a soil depth of 20 cm.

^c The range refers to the 10th and the 90th percentiles.

^d Observed values reported by the Province of Noord-Brabant (1996), for the top 10 cm of soil (reference year: 1995).

^e Observed values reported by RIVM (2014), for the top 10 cm of soil (reference year: 2003 for the grassland system; 2008 for the arable land system).

^f Observed values by reported by Bodemdata (2014), for various soil sampling depths ranging from 0 to 28 cm (reference year: 1989).

Effects of climate change and land management

M. Stergiadi et al.

Table 6. Changes in total SOC, DOC concentrations and DOC leaching rates for the grassland systems on sandy and loamy soil for the period 2013–2100, under the various climate change scenarios.

Scenarios	Soil type	SOC ₂₀₁₃ , %	SOC ₂₁₀₀ , %	ΔSOC, %	DOC _{1992–2012} , mgL ⁻¹	DOC _{2080–2100} , mgL ⁻¹	ΔDOC, %	Leached C _{1992–2012} , gm ⁻² yr ⁻¹	Leached C _{2080–2100} , gm ⁻² yr ⁻¹	Δ (Leached C), %
W+ cc T, P ^a	sandy	1.16	1.10	-5.1	10.51	7.96	-24.3	3.67	2.95	-19.6
	loamy	1.52	1.36	-10.5	4.96	2.53	-49.0	1.70	0.88	-48.2
W+ cc T ^b	sandy	1.16	1.03	-10.8	10.51	9.32	-11.3	3.67	3.35	-8.7
	loamy	1.52	1.33	-12.7	4.96	3.72	-25.0	1.70	1.28	-24.7
W+ cc P ^c	sandy	1.16	1.21	4.5	10.51	6.65	-36.7	3.67	2.57	-30.0
	loamy	1.52	1.50	-1.2	4.96	2.56	-48.4	1.70	0.95	-44.1
No cc ^d	sandy	1.16	1.15	-0.6	10.51	8.63	-17.9	3.67	3.28	-10.6
	loamy	1.52	1.49	-1.7	4.96	3.74	-24.6	1.70	1.38	-18.8
G+ cc T, P ^e	sandy	1.16	1.14	-1.9	10.51	8.11	-22.8	3.67	2.98	-18.8
	loamy	1.52	1.45	-4.9	4.96	3.18	-35.9	1.70	1.13	-33.5

^a W+ climate change scenario, considering changes in both temperature (T) and precipitation (P).

^b W+ climate change scenario, considering changes only in temperature (T).

^c W+ climate change scenario, considering changes only in precipitation (P).

^d No-climate-change scenario.

^e G+ climate change scenario, considering changes in both temperature (T) and precipitation (P).

Title Page

Abstract

Introduction

Conclusions

References

Tables

Figures



Back

Close

Full Screen / Esc

Printer-friendly Version

Interactive Discussion



Effects of climate change and land management

M. Stergiadi et al.

Table 7. Changes in total SOC, DOC concentrations and DOC leaching rates for the arable land systems on sandy and loamy soil for the period 2013–2100, under the various climate change scenarios.

Scenarios	Soil type	SOC ₂₀₁₃ , %	SOC ₂₁₀₀ , %	ΔSOC, %	DOC _{1992–2012} , mgL ⁻¹	DOC _{2080–2100} , mgL ⁻¹	ΔDOC, %	Leached C _{1992–2012} , gm ⁻² yr ⁻¹	Leached C _{2080–2100} , gm ⁻² yr ⁻¹	Δ (Leached C), %
W+ cc T, P ^a	sandy	1.01	0.93	-8.2	15.55	13.32	-14.3	5.94	5.28	-11.1
	loamy	1.32	1.27	-3.7	7.22	5.23	-27.6	2.76	1.98	-28.3
W+ cc T ^b	sandy	1.00	0.89	-10.8	15.55	15.38	-1.1	5.94	5.90	-0.7
	loamy	1.31	1.21	-7.5	7.22	6.46	-10.5	2.76	2.40	-13.0
W+ cc P ^c	sandy	1.01	1.01	-0.6	15.55	11.72	-24.6	5.94	4.91	-17.3
	loamy	1.32	1.35	1.8	7.22	4.94	-31.6	2.76	2.02	-26.8
No cc ^d	sandy	1.00	0.96	-4.1	15.55	14.07	-9.5	5.94	5.77	-2.9
	loamy	1.32	1.33	0.7	7.22	6.14	-15.0	2.76	2.48	-10.1
G+ cc T, P ^e	sandy	1.02	0.95	-6.2	15.55	13.18	-15.2	5.94	5.25	-11.6
	loamy	1.32	1.30	-1.6	7.22	5.31	-26.5	2.76	2.07	-25.0

^a W+ climate change scenario, considering changes in both temperature (*T*) and precipitation (*P*).

^b W+ climate change scenario, considering changes only in temperature (*T*).

^c W+ climate change scenario, considering changes only in precipitation (*P*).

^d No-climate-change scenario.

^e G+ climate change scenario, considering changes in both temperature (*T*) and precipitation (*P*).

Title Page

Abstract

Introduction

Conclusions

References

Tables

Figures



Back

Close

Full Screen / Esc

Printer-friendly Version

Interactive Discussion



Effects of climate change and land management

M. Stergiadi et al.

Table 8. Changes in total SOC, DOC concentrations and DOC leaching rates for the forest systems on sandy and loamy soil for the period 2013–2100, under the various climate change scenarios.

Scenarios	Soil type	SOC ₂₀₁₃ , %	SOC ₂₁₀₀ , %	ΔSOC, %	DOC _{1992–2012} , mgL ⁻¹	DOC _{2080–2100} , mgL ⁻¹	ΔDOC, %	Leached C _{1992–2012} , gm ⁻² yr ⁻¹	Leached C _{2080–2100} , gm ⁻² yr ⁻¹	Δ (Leached C), %
W+ cc T, P ^a	sandy	2.86	3.15	9.9	3.48	3.07	-11.8	0.88	0.79	-10.2
	loamy	0.63	0.68	7.5	1.73	1.57	-9.2	0.69	0.56	-18.8
W+ cc T ^b	sandy	2.86	3.16	10.4	3.48	3.63	4.3	0.88	0.89	1.1
	loamy	0.63	0.69	8.8	1.73	1.83	5.8	0.69	0.65	-5.8
W+ cc P ^c	sandy	2.86	3.12	9.0	3.48	2.51	-27.9	0.88	0.74	-15.9
	loamy	0.63	0.64	0.8	1.73	1.26	-27.2	0.69	0.52	-24.6
No cc ^d	sandy	2.86	3.13	9.3	3.48	3.11	-10.6	0.88	0.89	1.1
	loamy	0.63	0.65	2.2	1.73	1.57	-9.2	0.69	0.66	-4.3
G+ cc T, P ^e	sandy	2.86	3.14	9.5	3.48	2.92	-16.1	0.88	0.79	-10.2
	loamy	0.63	0.67	5.1	1.73	1.30	-24.9	0.69	0.50	-27.5

^a W+ climate change scenario, considering changes in both temperature (*T*) and precipitation (*P*).

^b W+ climate change scenario, considering changes only in temperature (*T*).

^c W+ climate change scenario, considering changes only in precipitation (*P*).

^d No-climate-change scenario.

^e G+ climate change scenario, considering changes in both temperature (*T*) and precipitation (*P*).

Title Page

Abstract

Introduction

Conclusions

References

Tables

Figures



Back

Close

Full Screen / Esc

Printer-friendly Version

Interactive Discussion



Effects of climate change and land management

M. Stergiadi et al.

Table 9. Changes in total SOC, DOC concentrations and DOC leaching rates for the grass-land systems on sandy and loamy soil for the period 2013–2100, under the land management change scenarios. Changes attributed only to climate change are also included for comparison.

Scenarios	Soil type	SOC ₂₀₁₃ , %	SOC ₂₁₀₀ , %	ΔSOC, %	DOC _{1992–2012} , mgL ⁻¹	DOC _{2080–2100} , mgL ⁻¹	ΔDOC, %	Leached C _{1992–2012} , gm ⁻² yr ⁻¹	Leached C _{2080–2100} , gm ⁻² yr ⁻¹	Δ (Leached C), %
G+ cc T, P ^a	sandy	1.16	1.14	-1.9	10.51	8.11	-22.9	3.67	2.98	-18.7
	loamy	1.52	1.45	-4.9	4.96	3.18	-35.8	1.70	1.13	-33.5
G+ cc RF ^b	sandy	1.16	1.14	-1.9	10.51	8.11	-22.9	3.67	2.98	-18.7
	loamy	1.52	1.45	-4.9	4.96	3.18	-35.8	1.70	1.13	-33.5
W+ cc T, P ^c	sandy	1.16	1.10	-5.1	10.51	7.96	-24.3	3.67	2.95	-19.7
	loamy	1.52	1.36	-10.5	4.96	2.53	-49.1	1.70	0.88	-48.3
W+ cc RF ^d	sandy	1.16	1.10	-5.2	10.51	7.96	-24.3	3.67	2.95	-19.7
	loamy	1.52	1.36	-10.5	4.96	2.53	-49.1	1.70	0.88	-48.3

^a G+ climate change scenario, considering changes in temperature (*T*) and precipitation (*P*). No changes in land management are considered.

^b G+ climate change scenario, considering changes in temperature (*T*) and precipitation (*P*) and a reduction in the fertilizer application rates.

^c W+ climate change scenario, considering changes in temperature (*T*) and precipitation (*P*). No changes in land management are considered.

^d W+ climate change scenario, considering changes in temperature (*T*) and precipitation (*P*) and a reduction in the fertilizer application rates.

[Title Page](#)
[Abstract](#)
[Introduction](#)
[Conclusions](#)
[References](#)
[Tables](#)
[Figures](#)
[Back](#)
[Close](#)
[Full Screen / Esc](#)
[Printer-friendly Version](#)
[Interactive Discussion](#)


Effects of climate change and land management

M. Stergiadi et al.

Table 10. Changes in total SOC, DOC concentrations and DOC leaching rates for the arable land systems on sandy and loamy soil for the period 2013–2100, under the land management change scenarios. Changes attributed only to climate change are also included for comparison.

Scenarios	Soil type	SOC ₂₀₁₃ , %	SOC ₂₁₀₀ , %	ΔSOC, %	DOC _{1992–2012} , mgL ⁻¹	DOC _{2080–2100} , mgL ⁻¹	ΔDOC, %	Leached C _{1992–2012} , gm ⁻² yr ⁻¹	Leached C _{2080–2100} , gm ⁻² yr ⁻¹	Δ (Leached C), %
G+ cc T, P ^a	sandy	1.02	0.95	-6.2	15.55	13.18	-15.2	5.94	5.25	-11.6
	loamy	1.32	1.30	-1.6	7.22	5.31	-26.5	2.76	2.07	-25.0
G+ cc RF ^b	sandy	1.01	0.81	-19.5	15.55	9.89	-36.4	5.94	3.95	-33.5
	loamy	1.31	1.19	-9.5	7.22	4.93	-31.7	2.76	1.92	-30.4
W+ cc T, P ^c	sandy	1.01	0.93	-8.2	15.55	13.32	-14.3	5.94	5.28	-11.1
	loamy	1.32	1.27	-3.7	7.22	5.23	-27.6	2.76	1.98	-28.3
W+ cc RF ^d	sandy	1.01	0.82	-18.5	15.55	10.55	-32.2	5.94	4.19	-29.5
	loamy	1.31	1.14	-13.3	7.22	4.84	-33.0	2.76	1.83	-33.7

^a G+ climate change scenario, considering changes in temperature (*T*) and precipitation (*P*). No changes in land management are considered.

^b G+ climate change scenario, considering changes in temperature (*T*) and precipitation (*P*) and a reduction in the fertilizers' application rates.

^c W+ climate change scenario, considering changes in temperature (*T*) and precipitation (*P*). No changes in land management are considered.

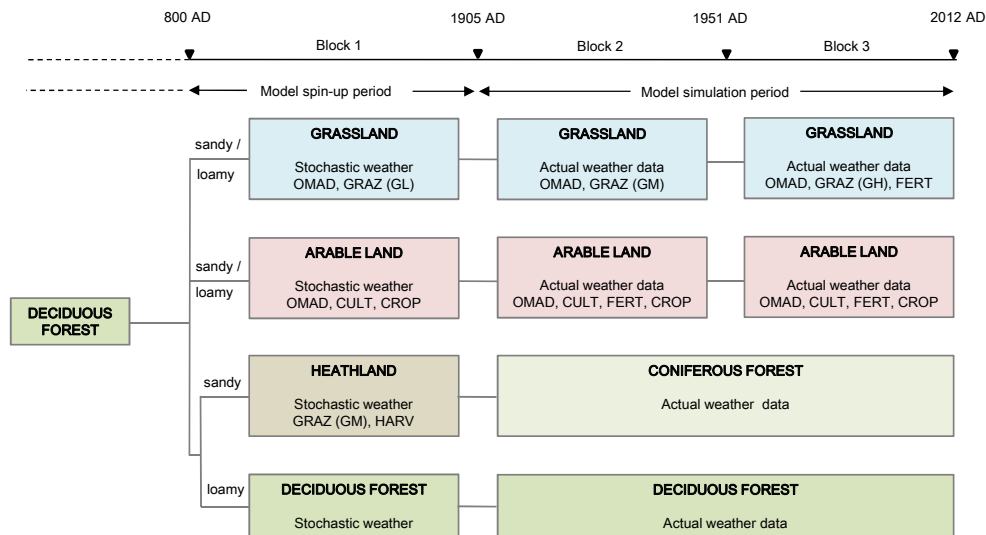
^d W+ climate change scenario, considering changes in temperature (*T*) and precipitation (*P*) and a reduction in the fertilizers' application rates.

[Title Page](#)
[Abstract](#)
[Introduction](#)
[Conclusions](#)
[References](#)
[Tables](#)
[Figures](#)

[Back](#)
[Close](#)
[Full Screen / Esc](#)
[Printer-friendly Version](#)
[Interactive Discussion](#)


Effects of climate change and land management

M. Stergiadi et al.



OMAD Organic matter addition
GRAZ Grazing
 GL no effect on production
 GM linear effect on production
 GH quadratic effect on production
CULT Cultivation
FERT Fertilization
CROP Crop planted

Figure 1. Scheme of the Century modelling procedure.

Title Page

Abstract

Introduction

Conclusions

References

Tables

Figures

⏪

⏩

◀

▶

Back

Close

Full Screen / Esc

Printer-friendly Version

Interactive Discussion



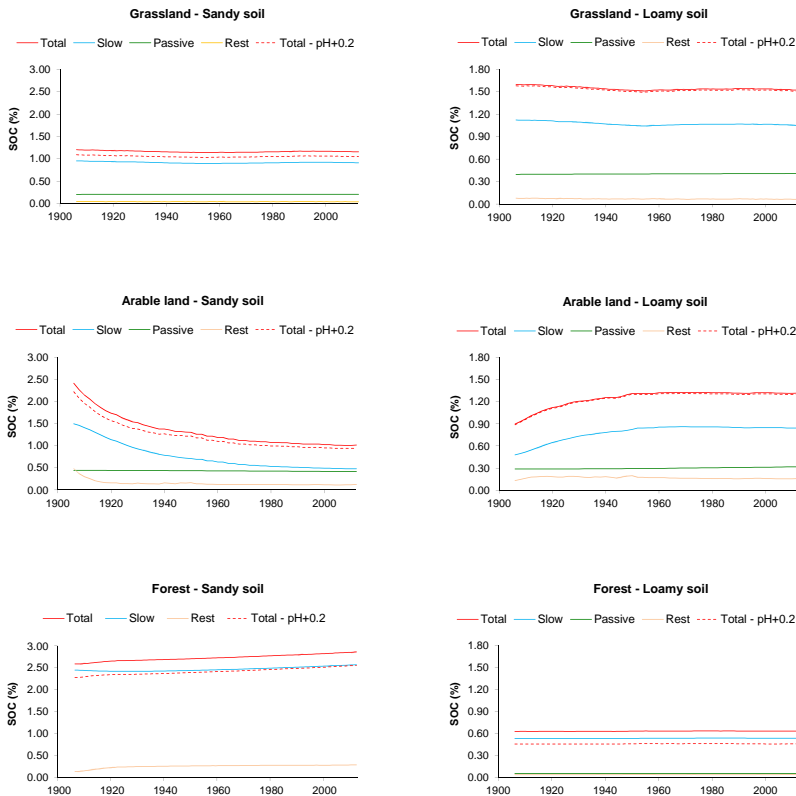


Figure 2. Changes in SOC stocks (0–20 cm) in grassland systems, arable land systems and forest systems on sandy and loamy soil for the period 1906–2012. Total SOC levels, as well as the size of the individual pools, are shown. “Rest” refers to the sum of SOC in the smaller pools (sum of active, structural and metabolic pools for all systems, except for the forest system on sandy soil for which “rest” also includes the passive pool). The dotted line represents the change in total SOC for increased soil pH by 0.2 pH units. Note the difference in scale of the vertical axes between the sandy and loamy soil.

Title Page

Abstract Introduction

Conclusions References

Tables Figures

◀ ▶

◀ ▶

Back Close

Full Screen / Esc

Printer-friendly Version

Interactive Discussion



Effects of climate change and land management

M. Stergiadi et al.

Title Page

Abstract

Introduction

Conclusions

References

Tables

Figures



Back

Close

Full Screen / Esc

Printer-friendly Version

Interactive Discussion

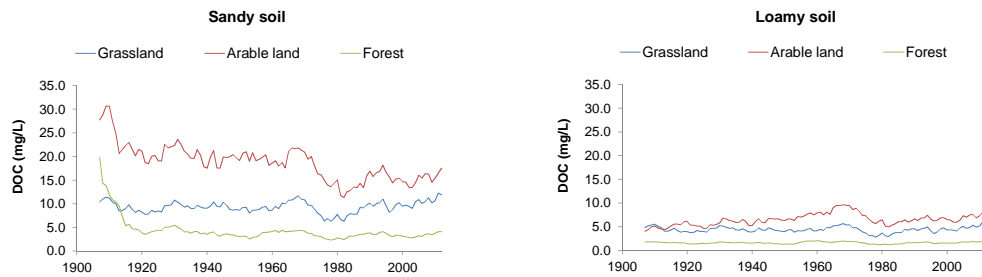


Figure 3. Changes in DOC concentrations (8 yr moving averages) in grassland systems, arable land systems and forest systems on sandy and loamy soil for the period 1906–2012.

Effects of climate change and land management

M. Stergiadi et al.

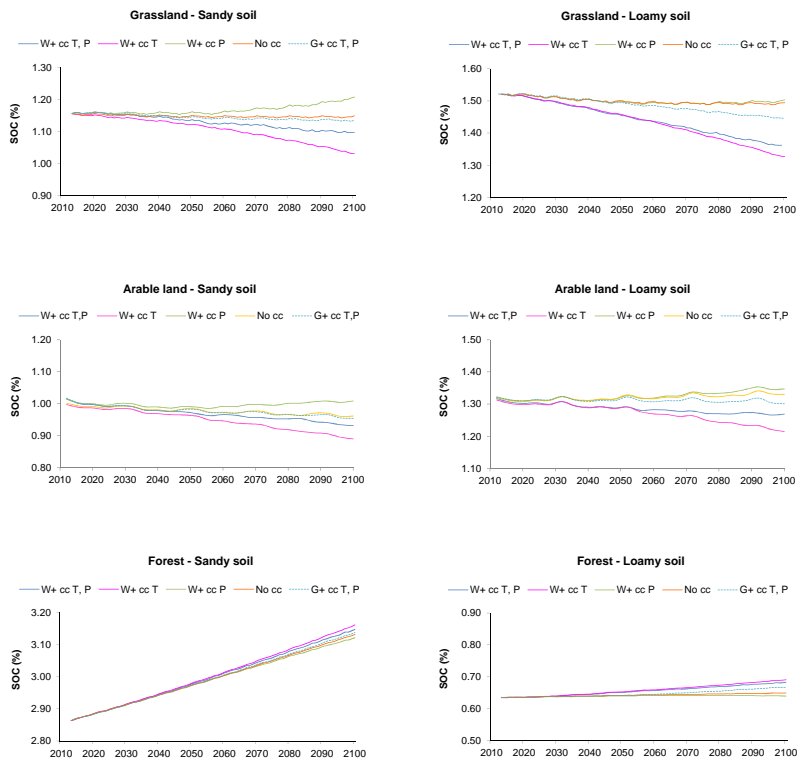


Figure 4. Changes in SOC levels (0–20 cm) in grassland systems, arable land systems and forest systems on sandy and loamy soil for the period 2013–2100, under the various climate change scenarios (*T*: temperature; *P*: precipitation; *W+ cc T, P*: *W+* climate change scenario considering changes in both *T* and *P*; *W+ cc T*: *W+* climate change scenario considering changes only in *T*; *W+ cc P*: *W+* climate change scenario considering changes only in *P*; *No cc*: No-climate-change scenario; *G+ cc T, P*: *G+* climate change scenario considering changes in both *T* and *P*). Note the difference in scale of the vertical axes between the different soil types and land use types.

Title Page

Abstract

Introduction

Conclusions

References

Tables

Figures



Back

Close

Full Screen / Esc

Printer-friendly Version

Interactive Discussion

